

LAND

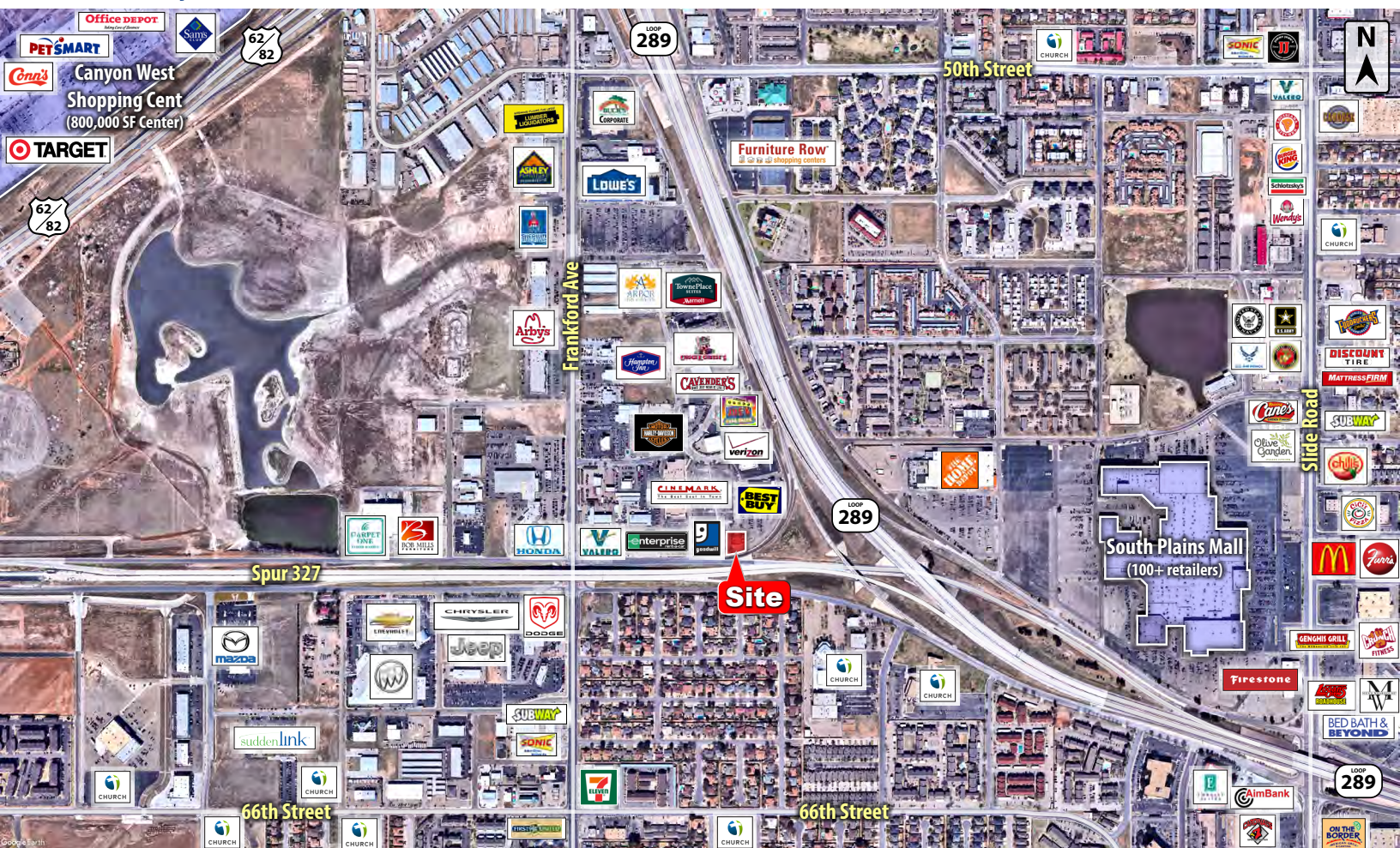
FOR SALE



**COLDWELL  
BANKER  
COMMERCIAL**

CAPITAL ADVISORS

**5702 SPUR 327  
LUBBOCK, TX 79424**



## NEARBY TENANTS 1.5 MILES



## PROPERTY INFORMATION

### LOCATION:

This property sits north of Spur 327 the west side of Frankford Avenue just outside of Loop 289.

### DESCRIPTION:

This perfectly positioned and long awaited commercial tract is now available. Sitting on the north side of Spur 327 the main corridor between two highly trafficked areas with great access and visibility, this tract is primed and ready to sell.

### FLOODZONE:

Property is not in the floodplain.

### SIZE:

0.54 Acres

### SALES PRICE:

\$298,000

**CBCCapitalAdvisors.com  
CBCWorldwide.com**

**Coldwell Banker Commercial  
CAPITAL ADVISORS**

4924 S. Loop 289  
Lubbock, TX 79414  
806.793.0888



**LUBBOCK, TX**
**CITY MAP**


## DEMOGRAPHICS

POPULATION	1 MILE	3 MILES	5 MILES
TOTAL POPULATION	12,458	83,919	176,834
MEDIAN AGE	35.3	35.8	32.6
MEDIAN AGE (MALE)	34.6	34.6	31.6
MEDIAN AGE (FEMALE)	36.1	37.1	34
HOUSEHOLDS & INCOME	1 MILE	3 MILES	5 MILES
TOTAL HOUSEHOLDS	5,942	35,775	70,384
# OF PERSONS PER HH	2.1	2.3	2.5
AVERAGE HH INCOME	\$56,982	\$68,709	\$65,564
AVERAGE HOUSE VALUE	\$118,075	\$152,012	\$148,527

For Additional  
Information Contact:



**Beau Tucker, CCIM**  
**The Land Man**

806.784.3298 direct

806.470.3944 cell

[BTucker@CBCWorldwide.com](mailto:BTucker@CBCWorldwide.com)