

LAND

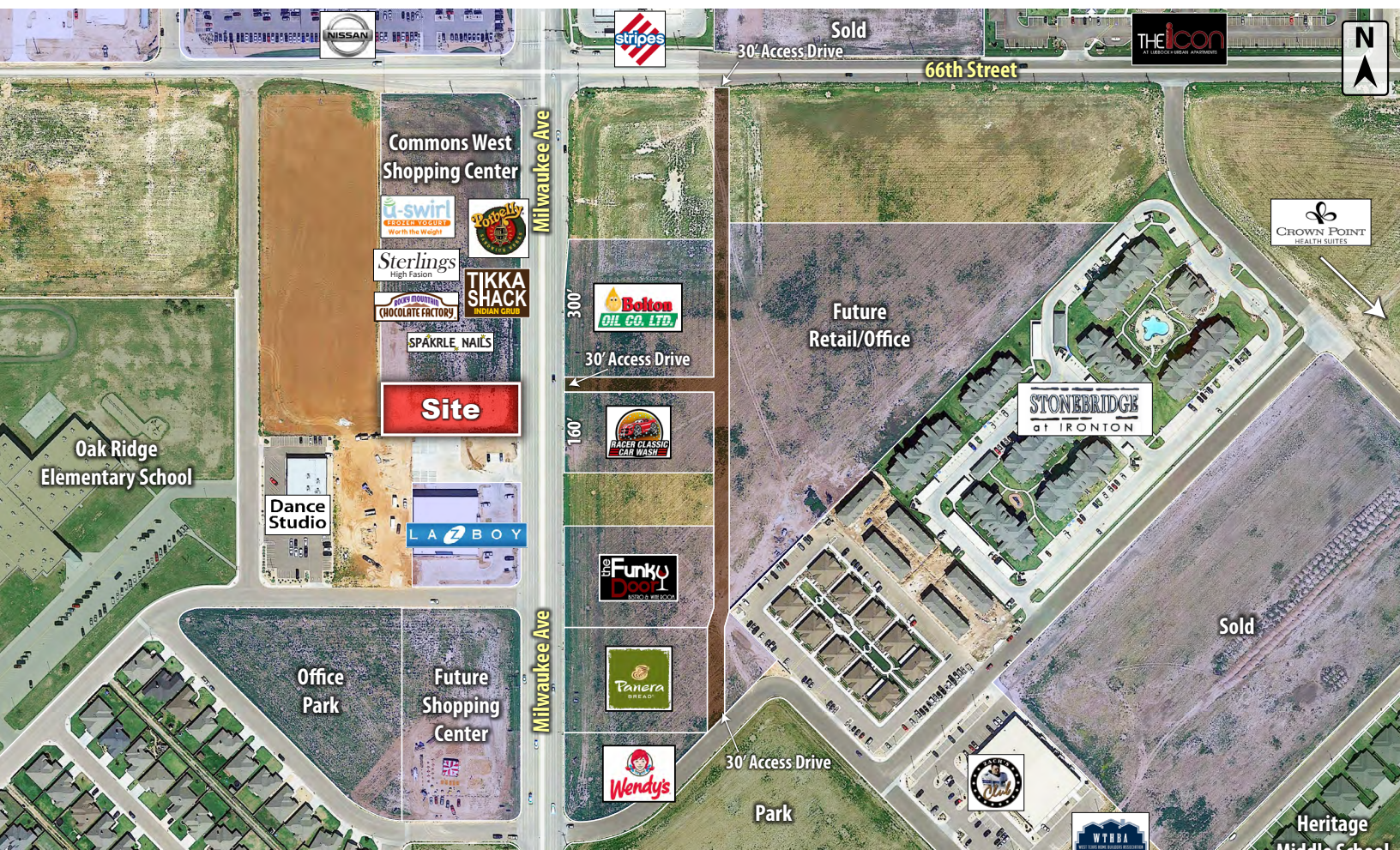
SALE



COLDWELL
BANKER
COMMERCIAL

CAPITAL ADVISORS

6704 MILWAUKEE AVENUE
LUBBOCK, TX 79424



NEARBY (0.5 MILES)



PROPERTY INFORMATION

LOCATION:

Located in southwest Lubbock at the southwest of the corner of 66th Street & Milwaukee Avenue.

DESCRIPTION:

This tract is in a well-established area of southwest Lubbock. Local tenants in the area include Nissan, Mazda, Arbor Inn & Suites, Holiday Inn (construction), Starbucks, The Funky Door, Potbelly, Rosa's Cafe, The Cotton Patch, Dunkin Donuts and many more.

FLOOD ZONE:

Properties are not in the floodplain.

SIZE:

35,022 Square Feet

PRICE:

\$25.00 per Square Foot

CBCCapitalAdvisors.com
CBCWorldwide.com

Coldwell Banker Commercial
CAPITAL ADVISORS

4924 S. Loop 289
Lubbock, TX 79414
806.793.0888

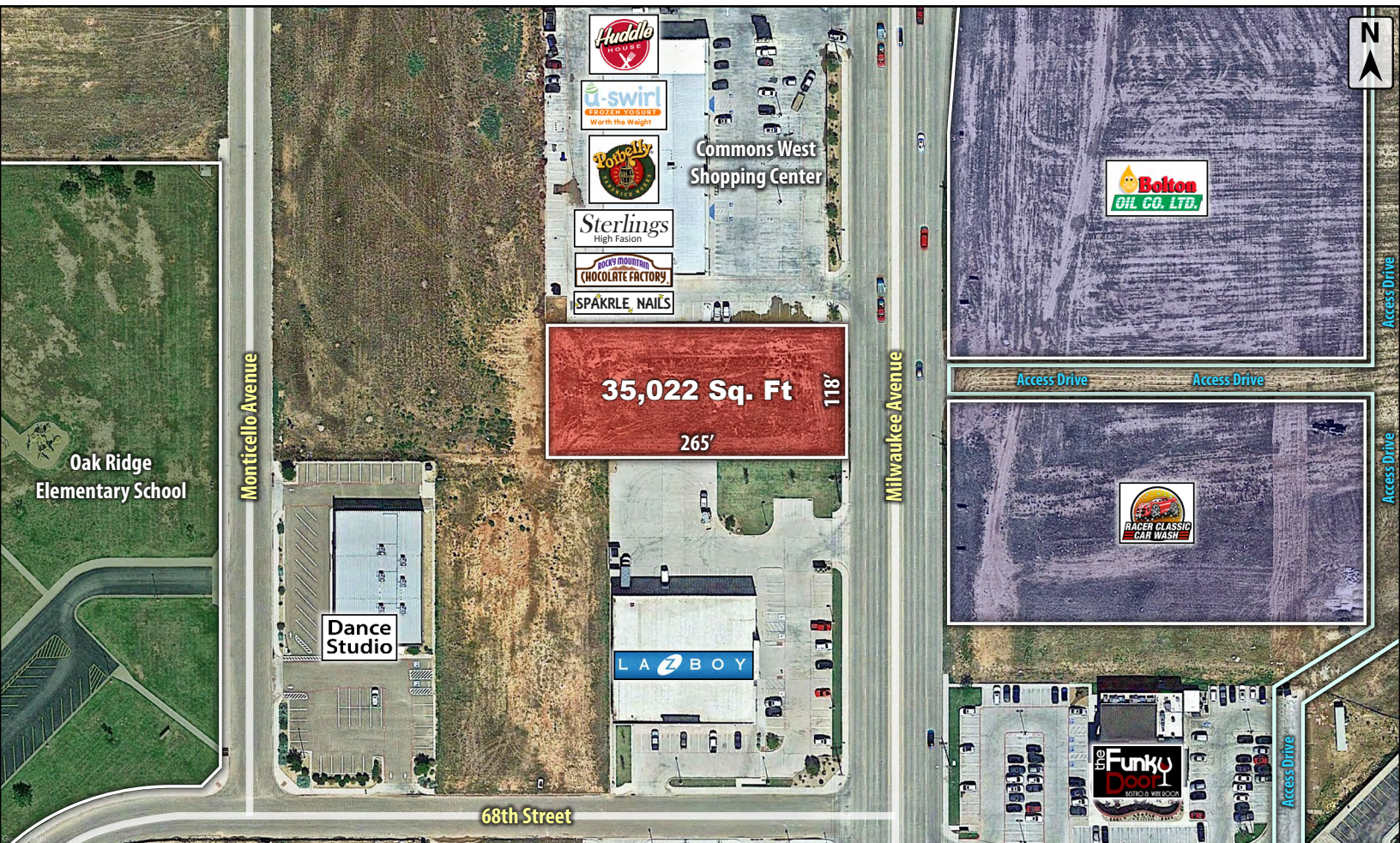


**COLDWELL
BANKER
COMMERCIAL**

CAPITAL ADVISORS

LUBBOCK, TX

SITE PLAN



DEMOGRAPHICS

POPULATION	1 MILES	3 MILES	5 MILES
TOTAL POPULATION	3,440	57,998	130,566
MEDIAN AGE	31.5	32.8	33.9
MEDIAN AGE (MALE)	31.1	32.0	32.8
MEDIAN AGE (FEMALE)	32.2	33.8	35.3
HOUSEHOLDS & INCOME	1 MILES	3 MILES	5 MILES
TOTAL HOUSEHOLDS	1,468	24,184	53,778
# OF PERSONS PER HH	2.3	2.4	2.4
AVERAGE HH INCOME	\$61,582	\$62,090	\$69,781
AVERAGE HOUSE VALUE	\$151,715	\$147,182	\$153,123

For Additional
Information Contact:



Beau Tucker, CCIM
The Land Man

806.784.3298 direct

806.470.3944 cell

BTucker@CBCWorldwide.com