

LAND

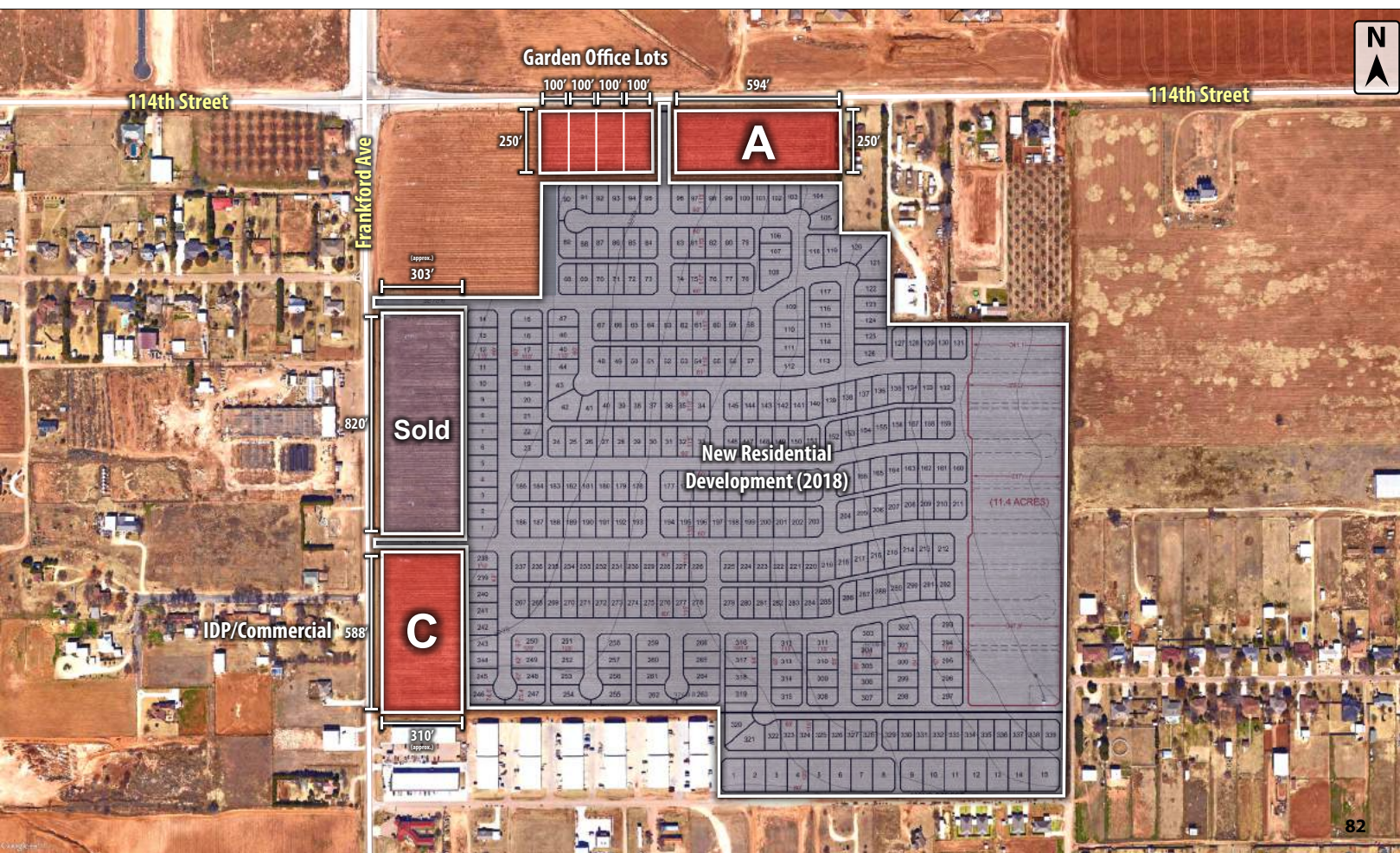
FOR SALE



**COLDWELL  
BANKER  
COMMERCIAL**

CAPITAL ADVISORS

**SEQ 114TH STREET & FRANKFORD AVENUE  
LUBBOCK, TX 79424**



**NEARBY TENANTS (2 MILES)**



**PROPERTY INFORMATION**

**LOCATION:**

Properties are located southeast of the 114th Street & Frankford Avenue. The garden office lots are located east of the intersection on 114th Street. The commercial park and industrial park tracts are located south of the intersection on Frankford Avenue.

**DESCRIPTION:**

These properties are located in the fast growing area of southwest Lubbock. Notable mentions within a 3.25-mile radius include three Walmarts, three United Supermarkets, Sprouts Farmers Market, Natural Grocers, Academy Sports, Cardinal's Sports Center, the South Plains Mall and 13,235 households.

**SIZE & PRICE:**

(TRACT SIZES ARE APPROXIMATE)

Garden Office Lots: 25,000 Square Feet at \$169,500 per lot

Tract A: 3.41 Acres at \$5.95 per Square Foot (SF)

Tract B: Sold

Tract C: 4.18 Acres at \$5.50 per SF (subdivided at \$5.00 per SF)

**CBCCapitalAdvisors.com  
CBCWorldwide.com**

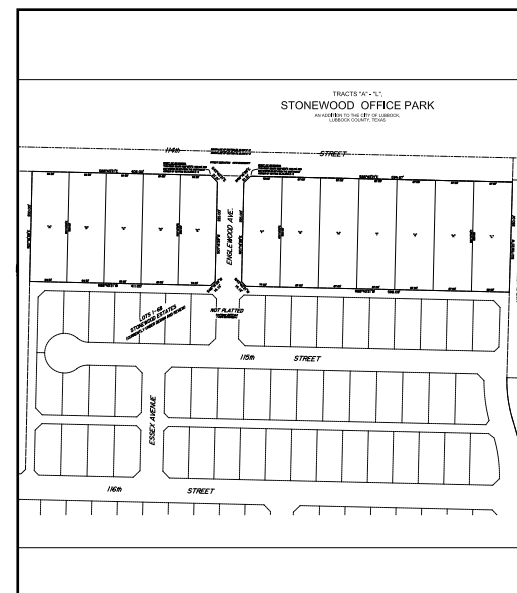
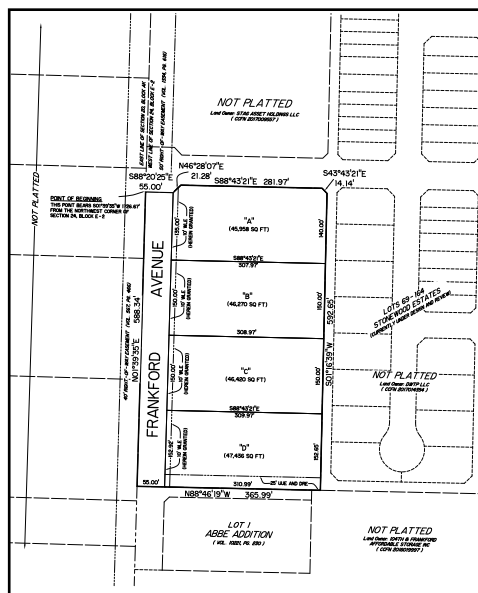
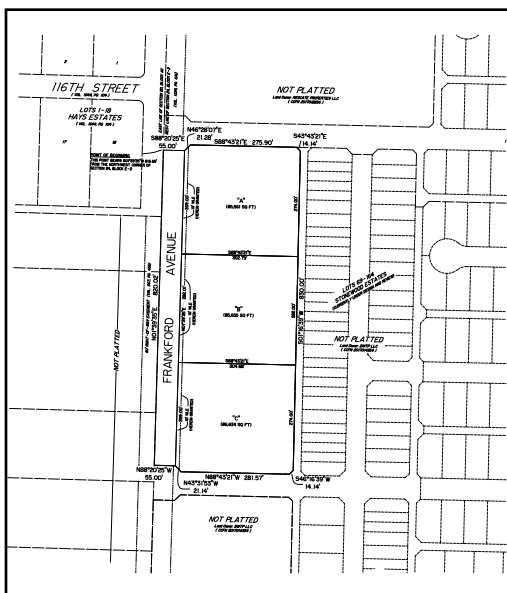
**Coldwell Banker Commercial  
CAPITAL ADVISORS**

4924 S. Loop 289  
Lubbock, TX 79414  
806.793.0888





## ADDITIONAL INFORMATION



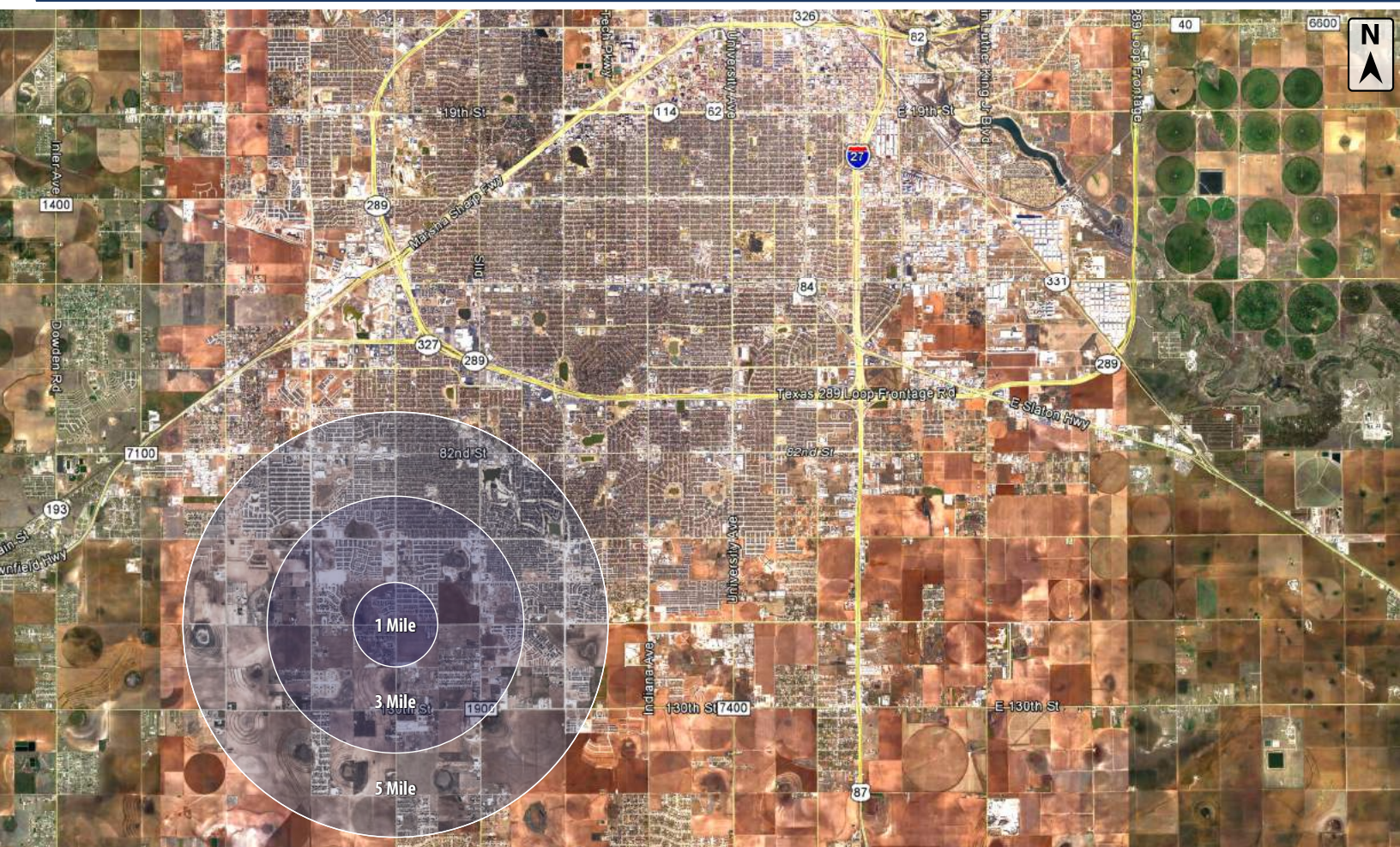




## LUBBOCK, TX

CAPITAL ADVISORS

### CITY MAP



## DEMOGRAPHICS

POPULATION	1 MILE	3 MILES	5 MILES
TOTAL POPULATION	444	31,964	96,008
AVERAGE AGE	35.1	40.8	36.7
AVERAGE AGE (MALE)	35.5	38.9	35.7
AVERAGE AGE (FEMALE)	34.2	42.0	37.7
HOUSEHOLDS & INCOME	1 MILE	3 MILES	5 MILES
TOTAL HOUSEHOLDS	155	13,235	39,928
# OF PERSONS PER HH	2.9	2.4	2.4
AVERAGE HH INCOME	\$111,955	\$97,445	\$74,596
AVERAGE HOUSE VALUE	\$225,468	\$173,792	\$157,595

For Additional  
Information Contact:



**Beau Tucker, CCIM**  
**The Land Man**

806.784.3298 direct

806.470.3944 cell

[BTucker@CBCWorldwide.com](mailto:BTucker@CBCWorldwide.com)