



6408 19TH STREET

Lubbock, TX 79407

LAND



QUICK FACTS



PURCHASE PRICE

\$12.00 PER SF



TOTAL ACREAGE

0.54 AC



ZONING

**GENERAL RETAIL
(C-3)**

CBCWORLDWIDE.COM

BEAU TUCKER, CCIM
806.784.3298
BTUCKER@CBCWORLDWIDE.COM
CBCLANDMAN.COM

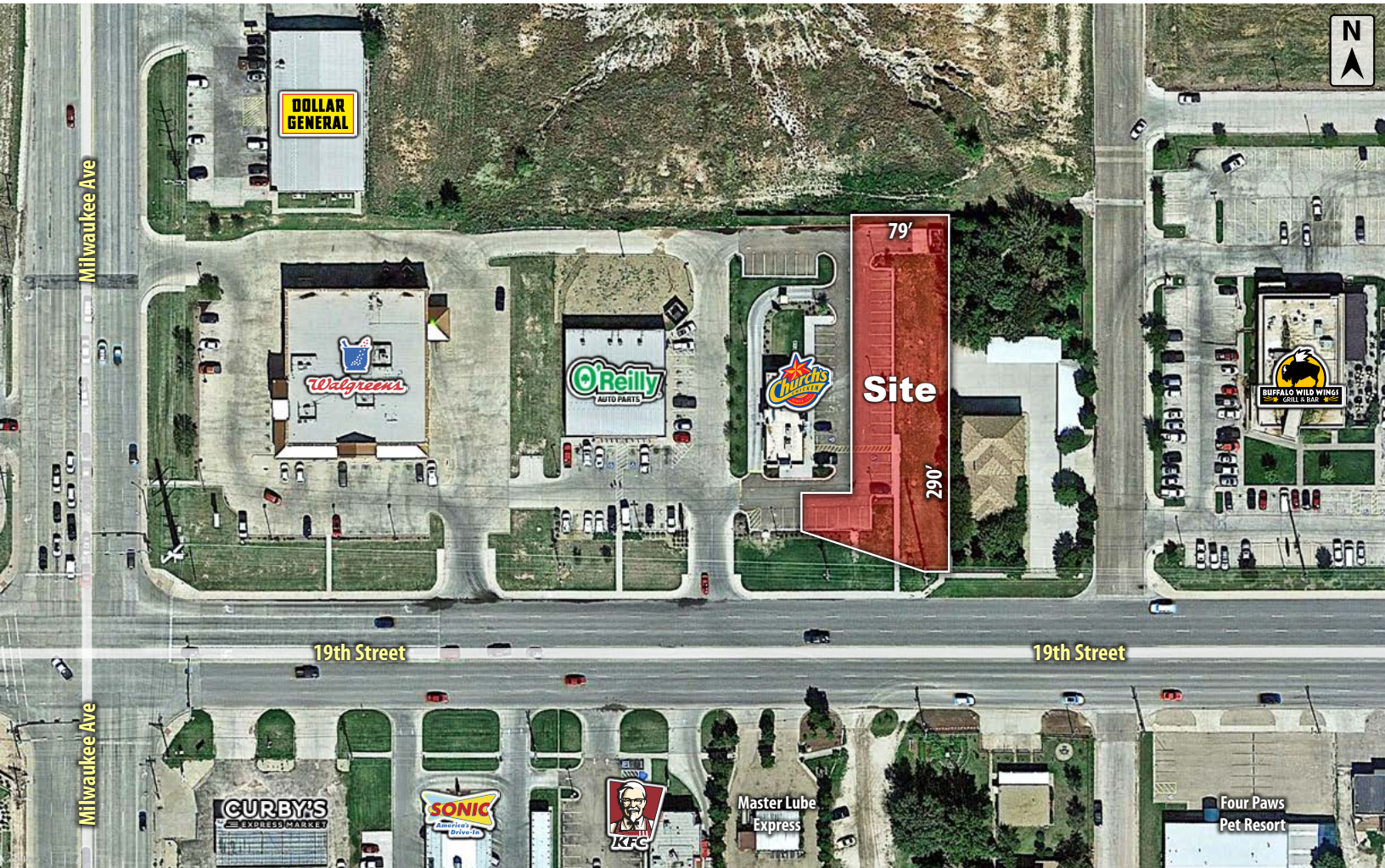
AARON HART
806.784.3254
AHART@CBCWORLDWIDE.COM
CBCLANDMAN.COM



**COLDWELL BANKER
COMMERCIAL**
CAPITAL ADVISORS



TRADE AREA & INFORMATION



LOCATION

Located on the north side of 19th Street just west of Milwaukee Avenue in Lubbock, TX.

DESCRIPTION

This is one of the last available tracts between Milwaukee Avenue & West Loop 289. With its great location and frontage visibility, this property is primed for development. The property is zoned for commercial use, it is currently undeveloped with all utilities to the site, and has the potential to be developed into a businesses, retail, restaurant, or office. 19th Street is also Highway 114 making it the preferred corridor out west of the city towards Levelland.

OPTIONS

0.54 Acres at \$12.00 per Sq. Ft.



**COLDWELL BANKER
COMMERCIAL**
CAPITAL ADVISORS

This map illustrates the spatial extent of the study area around Lubbock, Texas. Three concentric circles represent buffer zones of 1 mile, 3 miles, and 5 miles from the city center. The 1-mile buffer is the darkest gray, the 3-mile buffer is a medium gray, and the 5-mile buffer is the lightest gray. Major highways (Interstates 40, 70, and 80; State Routes 84, 114, 161, 289, 340, 381, 395, 527, 562, 62, 77, 82, 87, 118, 120, 130, 170, 214, 237, 261, 281, 300, 337, 375, 380, 390, 400, 469, 512, 526, 561, 590, 600, 601, 602, 603, 604, 605, 606, 607, 608, 609, 610, 611, 612, 613, 614, 615, 616, 617, 618, 619, 620, 621, 622, 623, 624, 625, 626, 627, 628, 629, 630, 631, 632, 633, 634, 635, 636, 637, 638, 639, 640, 641, 642, 643, 644, 645, 646, 647, 648, 649, 650, 651, 652, 653, 654, 655, 656, 657, 658, 659, 660, 661, 662, 663, 664, 665, 666, 667, 668, 669, 670, 671, 672, 673, 674, 675, 676, 677, 678, 679, 680, 681, 682, 683, 684, 685, 686, 687, 688, 689, 690, 691, 692, 693, 694, 695, 696, 697, 698, 699, 700, 701, 702, 703, 704, 705, 706, 707, 708, 709, 710, 711, 712, 713, 714, 715, 716, 717, 718, 719, 720, 721, 722, 723, 724, 725, 726, 727, 728, 729, 730, 731, 732, 733, 734, 735, 736, 737, 738, 739, 740, 741, 742, 743, 744, 745, 746, 747, 748, 749, 750, 751, 752, 753, 754, 755, 756, 757, 758, 759, 760, 761, 762, 763, 764, 765, 766, 767, 768, 769, 770, 771, 772, 773, 774, 775, 776, 777, 778, 779, 780, 781, 782, 783, 784, 785, 786, 787, 788, 789, 790, 791, 792, 793, 794, 795, 796, 797, 798, 799, 800, 801, 802, 803, 804, 805, 806, 807, 808, 809, 810, 811, 812, 813, 814, 815, 816, 817, 818, 819, 820, 821, 822, 823, 824, 825, 826, 827, 828, 829, 830, 831, 832, 833, 834, 835, 836, 837, 838, 839, 840, 841, 842, 843, 844, 845, 846, 847, 848, 849, 850, 851, 852, 853, 854, 855, 856, 857, 858, 859, 860, 861, 862, 863, 864, 865, 866, 867, 868, 869, 870, 871, 872, 873, 874, 875, 876, 877, 878, 879, 880, 881, 882, 883, 884, 885, 886, 887, 888, 889, 890, 891, 892, 893, 894, 895, 896, 897, 898, 899, 900, 901, 902, 903, 904, 905, 906, 907, 908, 909, 910, 911, 912, 913, 914, 915, 916, 917, 918, 919, 920, 921, 922, 923, 924, 925, 926, 927, 928, 929, 930, 931, 932, 933, 934, 935, 936, 937, 938, 939, 940, 941, 942, 943, 944, 945, 946, 947, 948, 949, 950, 951, 952, 953, 954, 955, 956, 957, 958, 959, 960, 961, 962, 963, 964, 965, 966, 967, 968, 969, 970, 971, 972, 973, 974, 975, 976, 977, 978, 979, 980, 981, 982, 983, 984, 985, 986, 987, 988, 989, 990, 991, 992, 993, 994, 995, 996, 997, 998, 999, 1000) are shown as thick black lines. Surrounding cities and towns are labeled in green text. A north arrow is located in the top right corner. The map data is attributed to Google and is dated 2010.



POPULATION	1 MILE	3 MILES	5 MILES
TOTAL POPULATION	11,953	57,751	151,147
MEDIAN AGE	25.1	30.0	31.7
MEDIAN AGE (MALE)	22.8	30.2	31.7
MEDIAN AGE (FEMALE)	27.6	31.7	33.2
HOUSEHOLDS & INCOME	1 MILE	3 MILES	5 MILES
TOTAL HOUSEHOLDS	4,866	26,591	64,745
# OF PERSONS PER HH	2.5	2.2	2.3
AVERAGE HH INCOME	\$53,312	\$60,254	\$65,165
AVERAGE HOUSE VALUE	\$96,078	\$119,281	\$141,413

BEAU TUCKER, CCIM
806.784.3298
BTUCKER@CBCWORLDWIDE.COM
CBCLANDMAN.COM

©2023 Coldwell Banker Real Estate LLC, dba Coldwell Banker Commercial Capital Advisors. All rights reserved. Coldwell Banker Commercial® and the Coldwell Banker Commercial are registered service marks owned by Coldwell Banker Real Estate LLC. Coldwell Banker Real Estate LLC, dba Coldwell Banker Commercial Affiliates fully supports the principles of the Fair Housing Act and the Equal Opportunity Act. Each office is independently owned and operated. The information provided is deemed reliable, but it is not guaranteed to be accurate or complete, and it should not be relied upon as such. This information should be independently verified before any person enters into a transaction based upon it.



COLDWELL BANKER
COMMERCIAL
CAPITAL ADVISORS