

LAND

SALE



**COLDWELL
BANKER
COMMERCIAL**

CAPITAL ADVISORS

**NEC 4TH & INLER
LUBBOCK COUNTY, TX 79416**



NEARBY TENANTS (1 MILE)



PROPERTY INFORMATION

LOCATION:

Conveniently located directly north of Wolfforth on Inler Avenue (FM 179). This property is located east of Inler Avenue and is on the North side of 4th Street (CR 2255) in Lubbock County, TX.

DESCRIPTION:

Large tract of land located outside Lubbock's west city limits. South Plains College at the Reese Technology Center & Airpark is 1-mile to the east and The Willow Bend Subdivision and Elementary School are directly south 1/4-mile.

SIZE:

14 Acres

PRICE:

\$65,000 per Acre

**CBCCapitalAdvisors.com
CBCWorldwide.com**

**Coldwell Banker Commercial
CAPITAL ADVISORS**

4924 S. Loop 289
Lubbock, TX 79414
806.793.0888

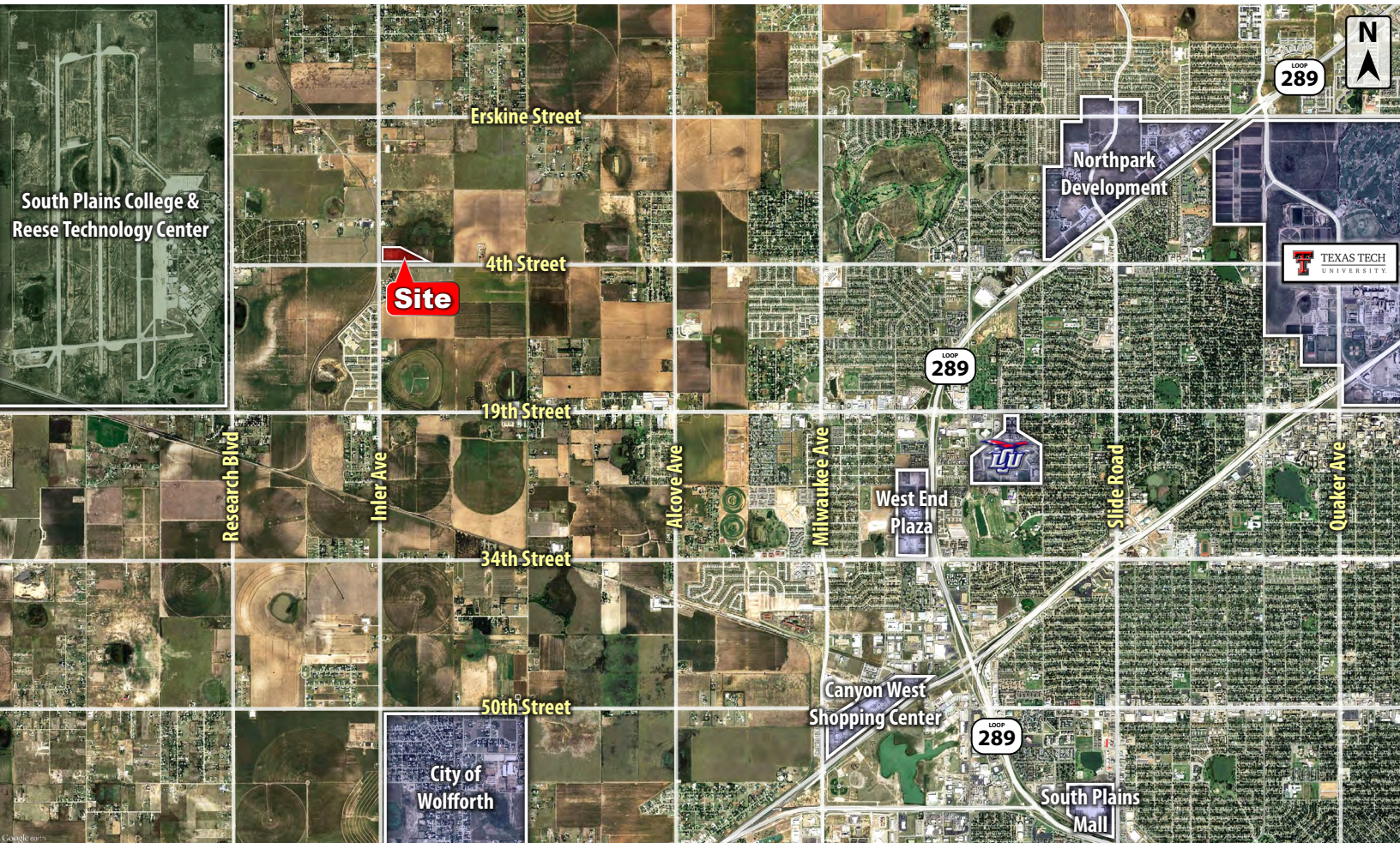


**COLDWELL
BANKER
COMMERCIAL**

CAPITAL ADVISORS

LUBBOCK, TX

FAR AERIAL



DEMOGRAPHICS

POPULATION	1 MILES	3 MILES	5 MILES
TOTAL POPULATION	3,687	45,790	127,258
MEDIAN AGE	36.2	38.3	35.3
MEDIAN AGE (MALE)	33.2	37.1	33.9
MEDIAN AGE (FEMALE)	39.4	39.6	36.6
HOUSEHOLDS & INCOME	1 MILES	3 MILES	5 MILES
TOTAL HOUSEHOLDS	1,523	19,048	52,070
# OF PERSONS PER HH	2.4	2.4	2.4
AVERAGE HH INCOME	\$75,990	\$83,109	\$65,367
AVERAGE HOUSE VALUE	\$136,814	\$147,751	\$141,398

For Additional
Information Contact:



Beau Tucker, CCIM
The Land Man

806.784.3298 direct

806.470.3944 cell

BTucker@CBCWorldwide.com