

LAND

FOR SALE



COLDWELL  
BANKER  
COMMERCIAL

CAPITAL ADVISORS

5502 114TH STREET  
LUBBOCK, TX 79424



Beau Tucker, CCIM  
The Land Man

806.784.3298 direct  
806.470.3944 cell  
BTucker@CBCWorldwide.com

## PROPERTY INFORMATION

### LOCATION:

Located at the northwest corner of Chicago Avenue and 114th Street.

### DESCRIPTION:

This large tract has 816 feet of frontage on 114th Street and is strategically situated between two of the fastest growing areas in Lubbock. The Milwaukee Corridor is 2.5 miles west and the Vintage Township Development is 1.5 miles east.

### ZONING:

Garden Office

### FLOOD ZONE:

Property is not in a flood zone.

### SIZE:

6 Acres

### SALES PRICE:

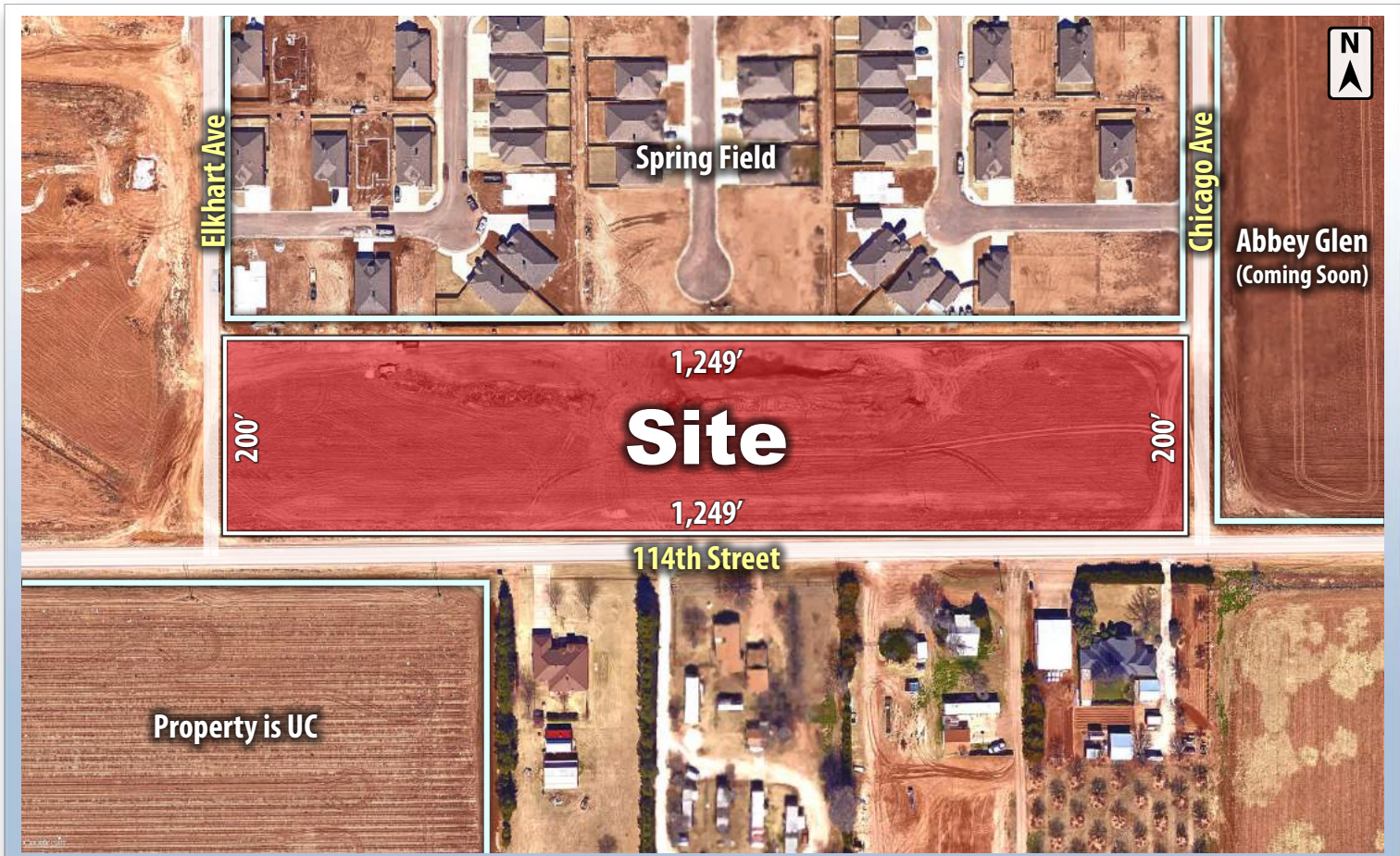
\$4.50 per sq. ft.

### ADDITIONAL:

Can be subdivided



# AERIAL



## DEMOGRAPHICS

POPULATION	1 MILE	3 MILES	5 MILES
TOTAL POPULATION	573	34,759	102,513
AVERAGE AGE	36.0	41.1	36.7
AVERAGE AGE (MALE)	36.4	39.0	35.6
AVERAGE AGE (FEMALE)	35.2	42.3	37.8
HOUSEHOLDS & INCOME	1 MILE	3 MILES	5 MILES
TOTAL HOUSEHOLDS	205	14,478	43,530
# OF PERSONS PER HH	2.8	2.4	2.4
AVERAGE HH INCOME	\$120,568	\$172,889	\$157,527
AVERAGE HOUSE VALUE	\$227,031	\$172,889	\$157,527

### Mini-Map and Location

