



BUSINESS PARK



34th Street & Inler Avenue
Lubbock County, TX 79407



SIZES & PRICE

INDIVIDUAL TRACT SIZE AND PRICE BREAKDOWN

TRACT A:

Size: 2.06 Acres
Price: \$123,600

TRACT B:

Sold

TRACT C:

Sold

TRACT D:

Sold

TRACT E:

Size 1.93 Acres
Price: \$115,800

TRACT F:

Sold

TRACT G:

Sold

TRACT H:

Sold

TRACT I:

Size: 1.45 Acres
Price: \$58,000

TRACT J:

Size: 1.47 Acres
Price: \$58,800

TRACT K:

Size: 5.51 Acres
Price: \$247,950

TRACT L:

Size: 8.49 Acres
Price: \$361,600

TRACT M:

Size: 1.58 Acres
Price: \$63,200

TRACT N:

Size: 1.55 Acres
Price: \$77,500

TRACT O:

Size: 3.86 Acres
Price: \$308,800

TRACT P:

Size: 6.62 Acres
Price: \$264,800

TRACT Q:

Size: 1.93 Acres
Price: \$154,400

TRACT R:

Size: 1.93 Acres
Price: \$154,400

TRACT S:

Size: 1.93 Acres
Price: \$154,400

TRACT T:

Size: 1.93 Acres
Price: \$154,400

TRACT U:

Size: 3.86 Acres
Price: \$308,800

TRACT V:

Size: 5.81 Acres
Price: \$232,400

TRACT W:

Size: 5.51 Acres
Price: \$220,400

TRACT X:

Size: 4.92 Acres
Price: \$196,800

TRACT Y:

Size: 13.51 Acres
Price: \$540,400

TRACT Z:

Size: 17.63 Acres
Price: \$705,200

TRACT AA:

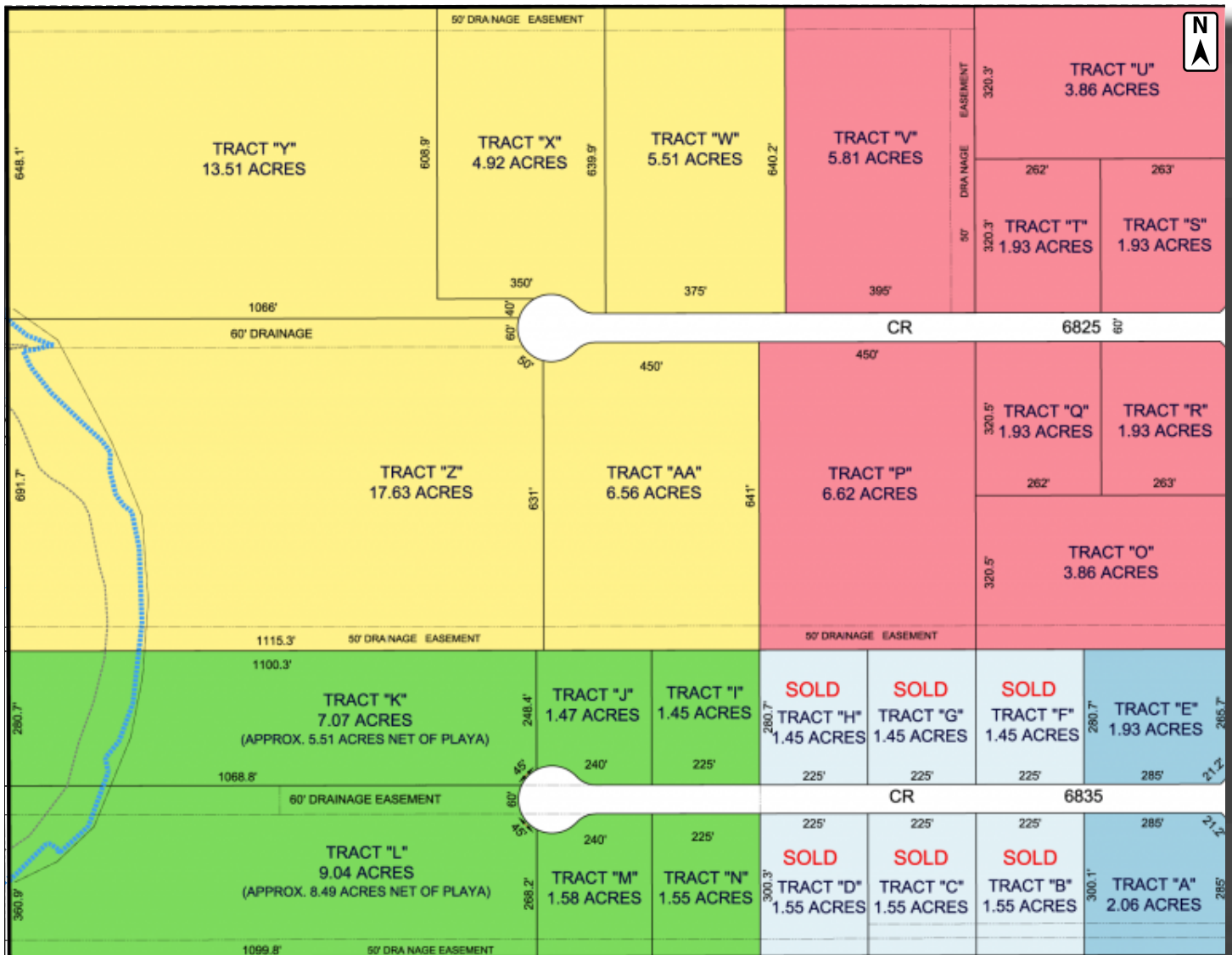
Size: 6.56 Acres
Price: \$308,800

* Stated sizes are preliminary and can change based off of purchaser's needs.

SITE PLAN



**COLDWELL
BANKER
COMMERCIAL**



PROPERTY INFORMATION

LOCATION:

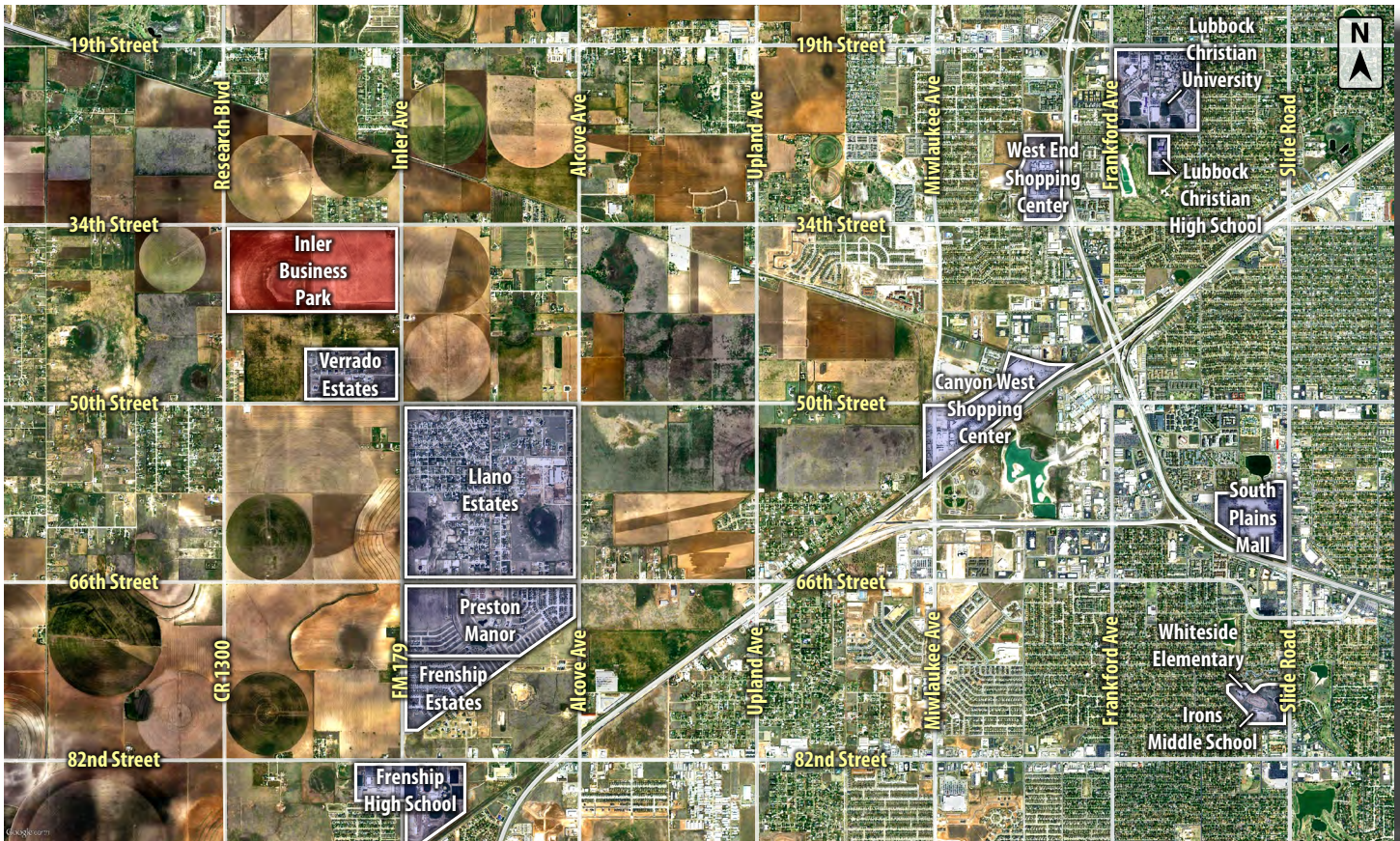
Conveniently located just north of Wolfforth on FM 179 & Inler Ave, the Inler Business Park sits on the west side of the road. Property sits just 2.5 miles north of the Frenship High School located at 82nd Street & FM 179 in Wolfforth.

DESCRIPTION:

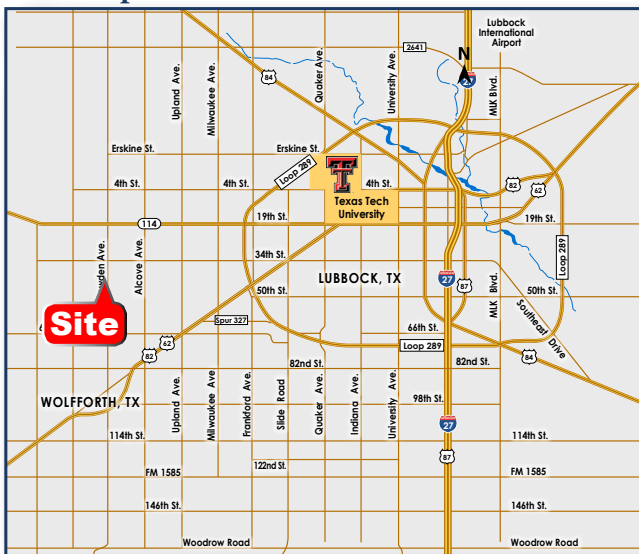
Industrial Development Lots Available For Sale within the Inler Business Park, Lubbock's newest Industrial Park development with Phase 1 under construction right now. Property is located on FM 179 (Inler Ave) on the west side of the road. Lot sizes range from 1.55 acres to 2.08 acres in size. Multiple lots in Phase 1 have already sold.

MAPS & CONTACT INFO

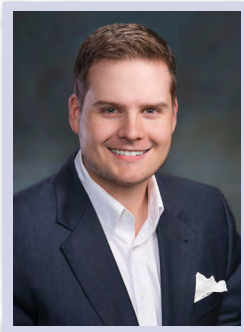
CITY MAP



Mini-Map and Location



For Additional
Information Contact:



Beau Tucker, CCIM
The Land Man
806.784.3298 direct
806.470.3944 cell
BTucker@CBCWorldwide.com



Jef Conn, CCIM
Industrial Specialist
806.784.3216 direct
806.787-4779 cell
JConn@CBCWorldwide.com

