

LAND

FOR SALE

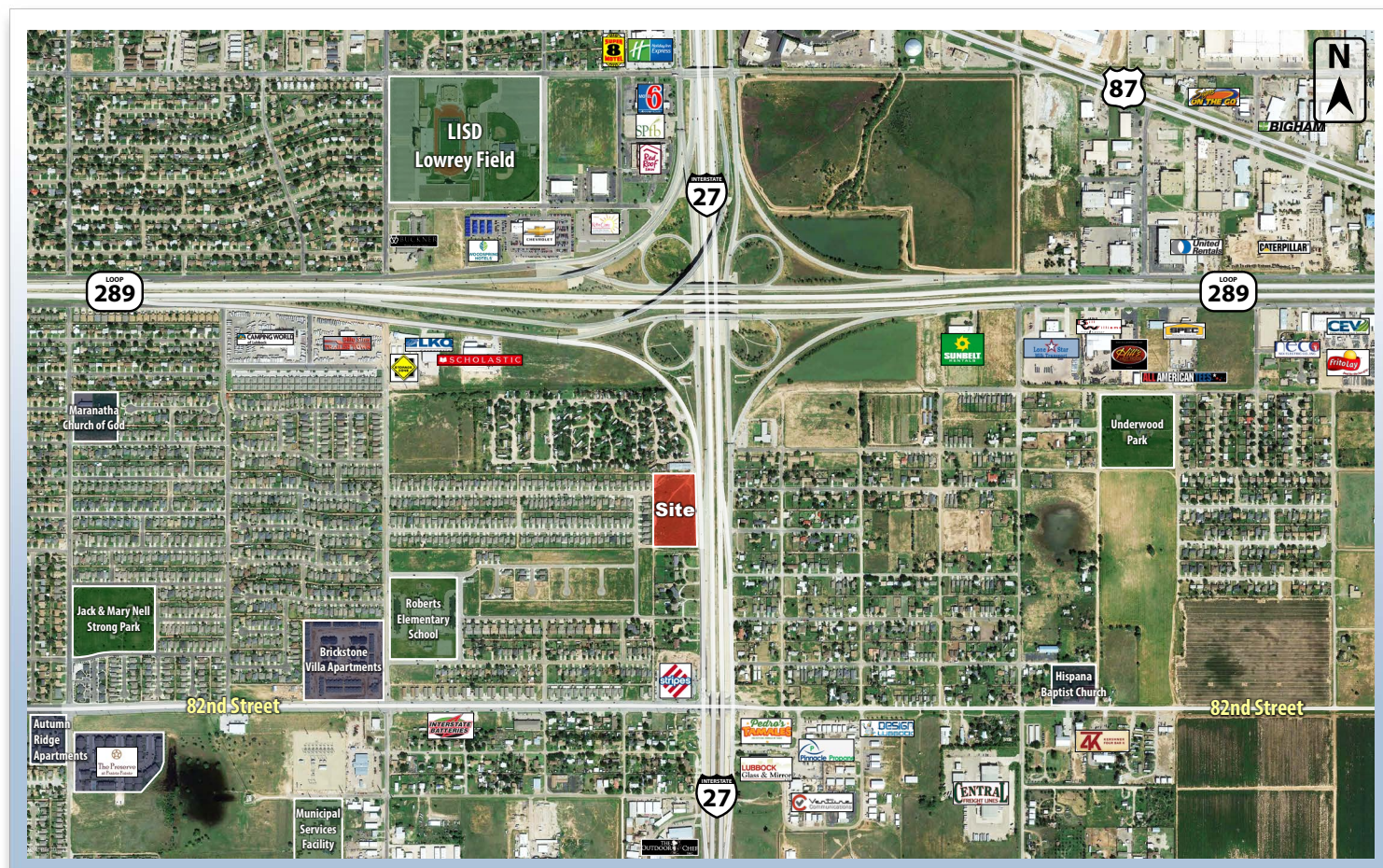


COLDWELL
BANKER
COMMERCIAL

CAPITAL ADVISORS

7708 I-27

LUBBOCK, TX 79423



Beau Tucker, CCIM
The Land Man

806.784.3298 direct

806.470.3944 cell

BTucker@CBCWorldwide.com

PROPERTY INFORMATION

LOCATION:

Located off of the west access road of I-27 just south of Loop 289. The west side of the property can also be accessed by heading east from the 77th Street & Avenue P intersection.

DESCRIPTION:

This large development tract is in the heart of the city and is currently one of the last undeveloped tracts in the city limits with frontage on I-27. The property has 703 feet of frontage and has multiple access points from both the Interstate and side streets to the west.

FLOOD ZONE:

Property is not in a flood zone.

SIZE:

5.242 Acres

ZONING:

IHS (Interstate Highway Commercial)

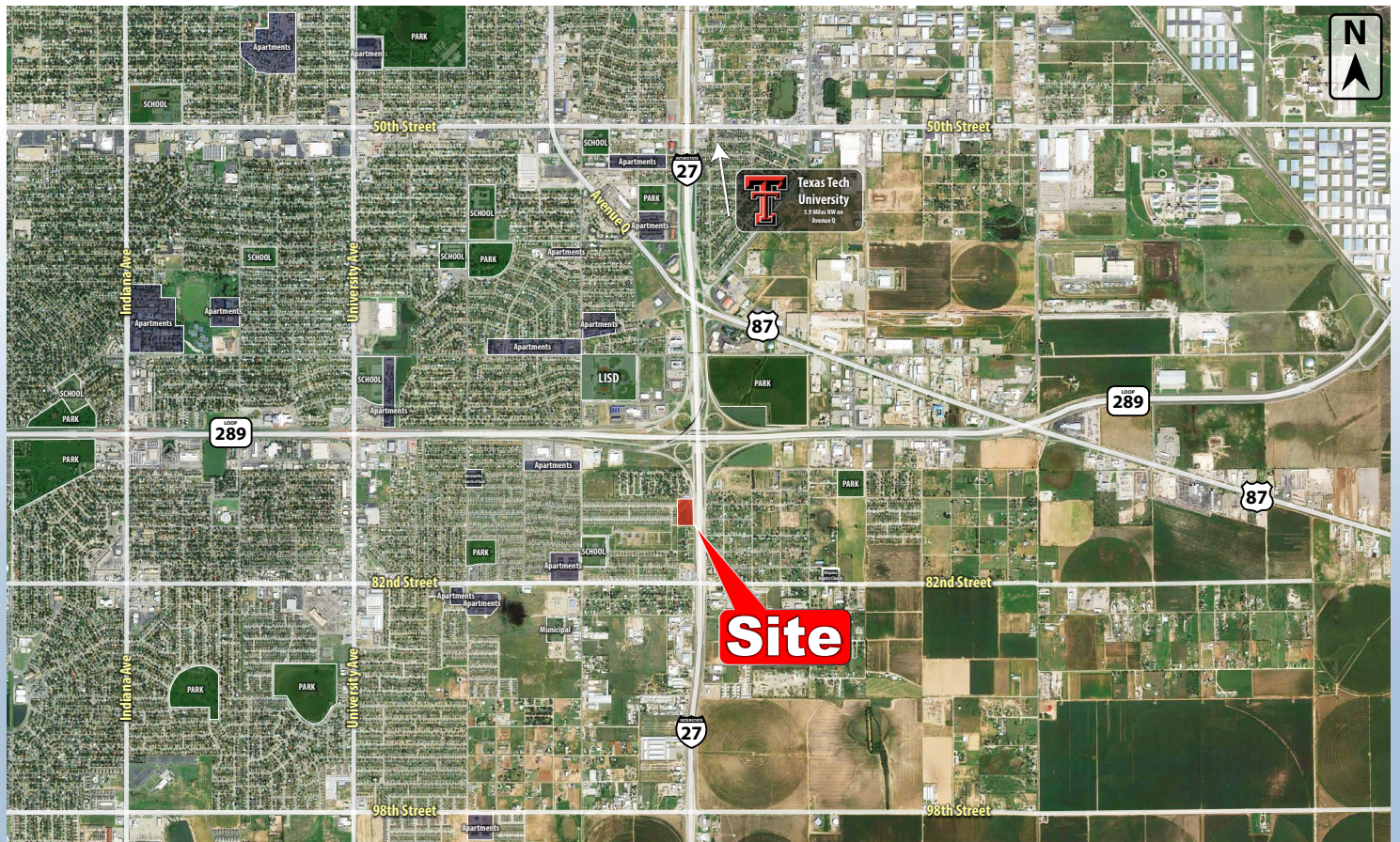
SALES PRICE:

\$3.00 per sq. ft.

AERIAL



CAPITAL ADVISORS



Site Plan & Utilities



Mini-Map and Location

