



# NEW HOME RESIDENTIAL LAND

SEC CR 6 & CR Nora | Wilson, TX 79381

LAND



## QUICK FACTS



PURCHASE PRICE

**\$9,000 per Acre**



TOTAL ACREAGE

**160 AC**



ZONING

**Development Land**

[CBCWORLDWIDE.COM](http://CBCWORLDWIDE.COM)

Beau Tucker, CCIM  
806.470.3944  
[BTucker@CBCWorldwide.com](mailto:BTucker@CBCWorldwide.com)  
[CBCLandMan.com](http://CBCLandMan.com)



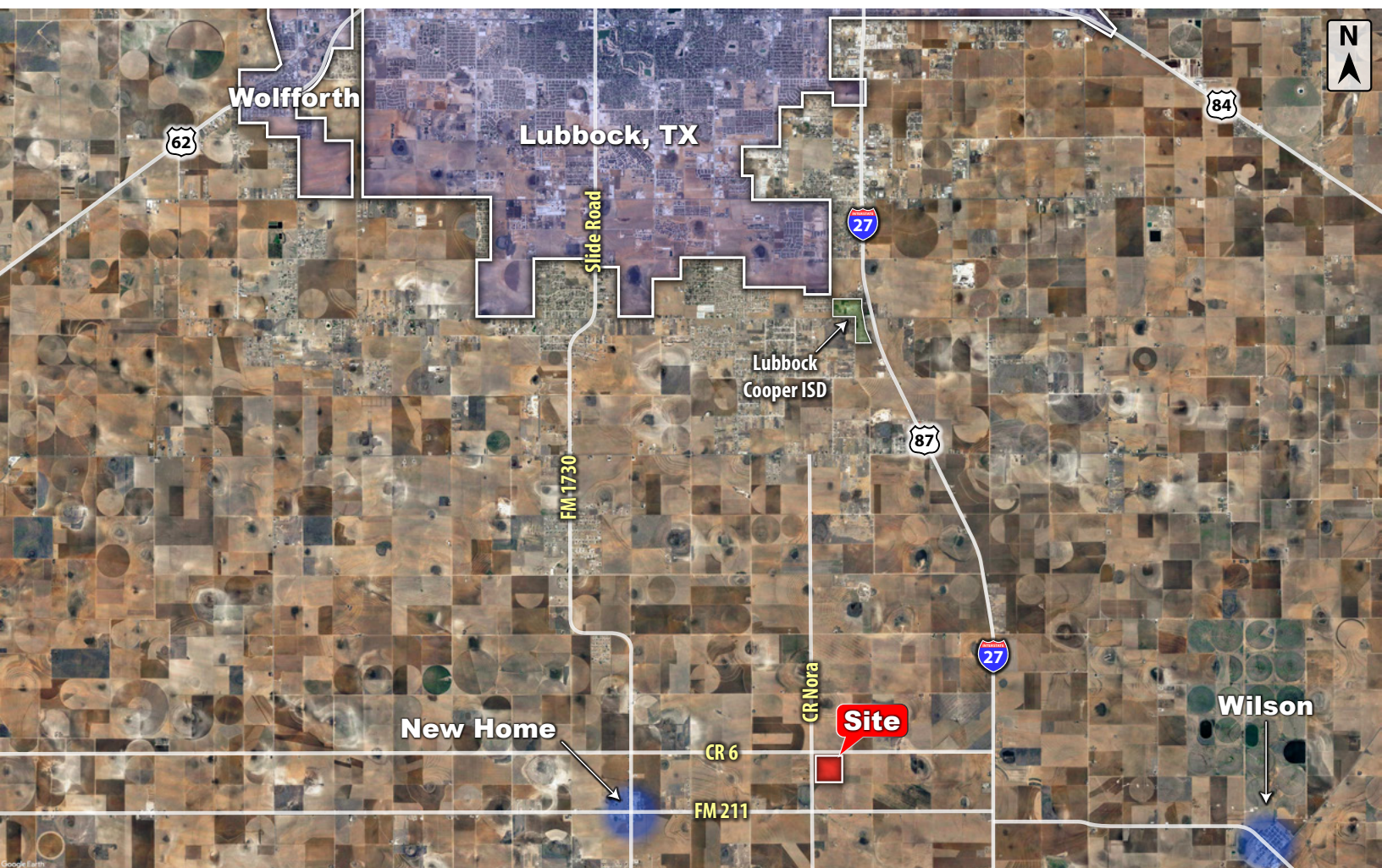
**COLDWELL  
BANKER  
COMMERCIAL**

**CAPITAL ADVISORS**





## Trade Area & Information



## LOCATION

Located at the southeast corner of CR 6 and CR Nora in between the city of New Home and I-27.

## DESCRIPTION

This large development tract of land is 2.5 miles east of New Home and 9 miles south of the Lubbock city limits. Additionally, I-27 is just a few-minute drive to the east which then puts both south Lubbock and Tahoka at a 15-minute drive away. These 160 acres are just out of the way enough for country life living while leaving the big city within reach. Ideally, this property can be subdivided to provide many 5-10 acre homesteads.

The property is not in the floodplain.

## OPTIONS

160 Acres - \$9,000 per Acre



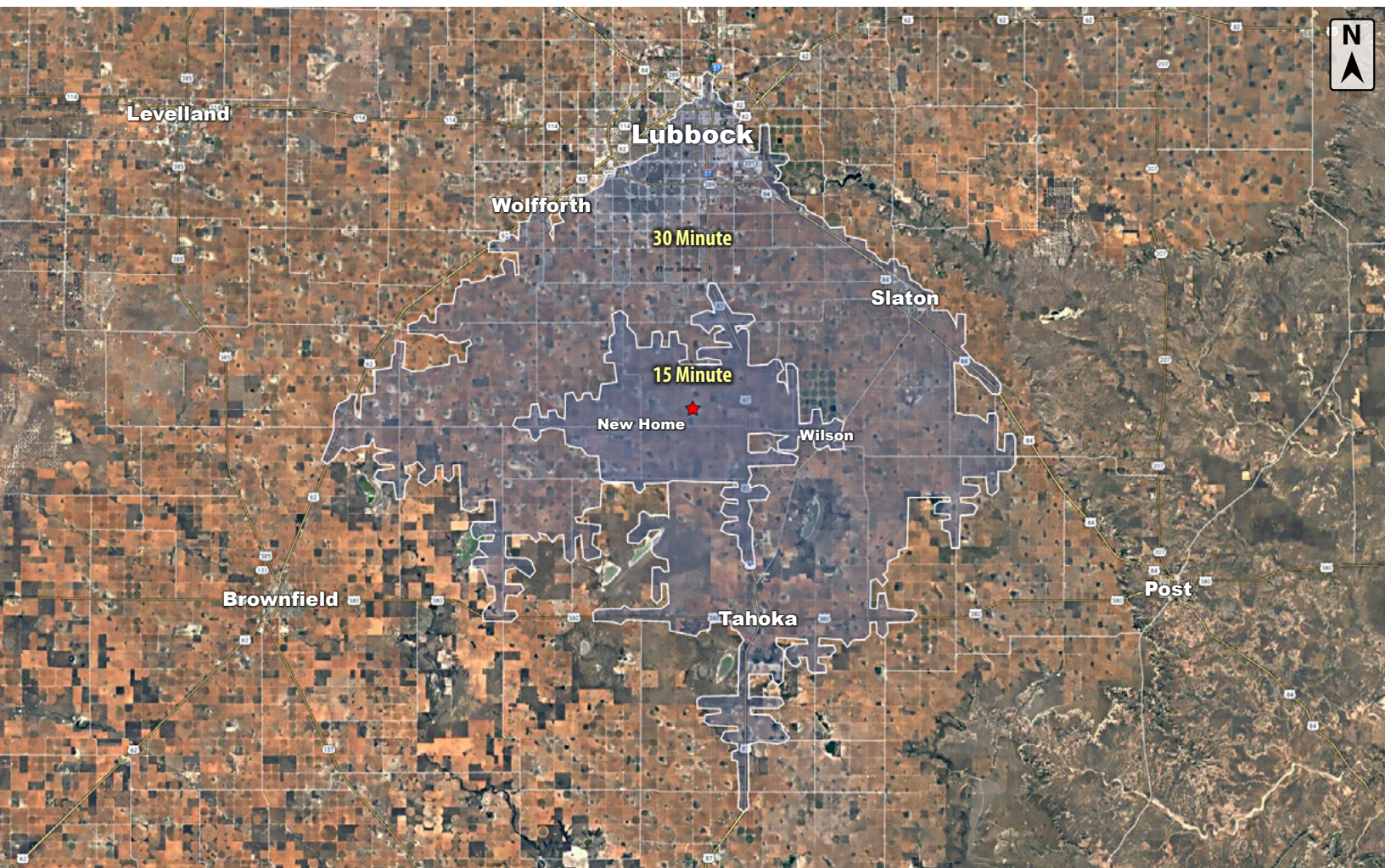
**COLDWELL  
BANKER  
COMMERCIAL**

CAPITAL ADVISORS





## Drive Times



### BEAU TUCKER, CCIM

Land and Investment Specialist

BTucker@CBCWorldwide.com  
Cell: 806.470.3944 | Direct: 806.784.3298

BEAU TUCKER - CCIM

**THE LAND MAN**  
WEST TEXAS LAND TEAM

CBCWORLDWIDE.COM

Beau Tucker, CCIM  
806.470.3944  
BTucker@CBCWorldwide.com  
CBCLandMan.com

©2020 Coldwell Banker Real Estate LLC, dba Coldwell Banker Commercial Capital Advisors. All rights reserved. Coldwell Banker Commercial® and the Coldwell Banker Commercial are registered service marks owned by Coldwell Banker Real Estate LLC. Coldwell Banker Real Estate LLC, dba Coldwell Banker Commercial Affiliates fully supports the principles of the Fair Housing Act and the Equal Opportunity Act. Each office is independently owned and operated. The information provided is deemed reliable, but it is not guaranteed to be accurate or complete, and it should not be relied upon as such. This information should be independently verified before any person enters into a transaction based upon it.



**COLDWELL  
BANKER  
COMMERCIAL**

CAPITAL ADVISORS