



NEC 114TH STREET & UNIVERSITY AVENUE

Lubbock, TX 79423

LAND



QUICK FACTS



PURCHASE PRICE

\$5.75+ PER SQ. FT.



TOTAL ACREAGE

2-6.4 AC



ZONING

COMMERCIAL

CBCWORLDWIDE.COM

BEAU TUCKER, CCIM
806.784.3298
BTUCKER@CBCWORLDWIDE.COM
CBCLANDMAN.COM

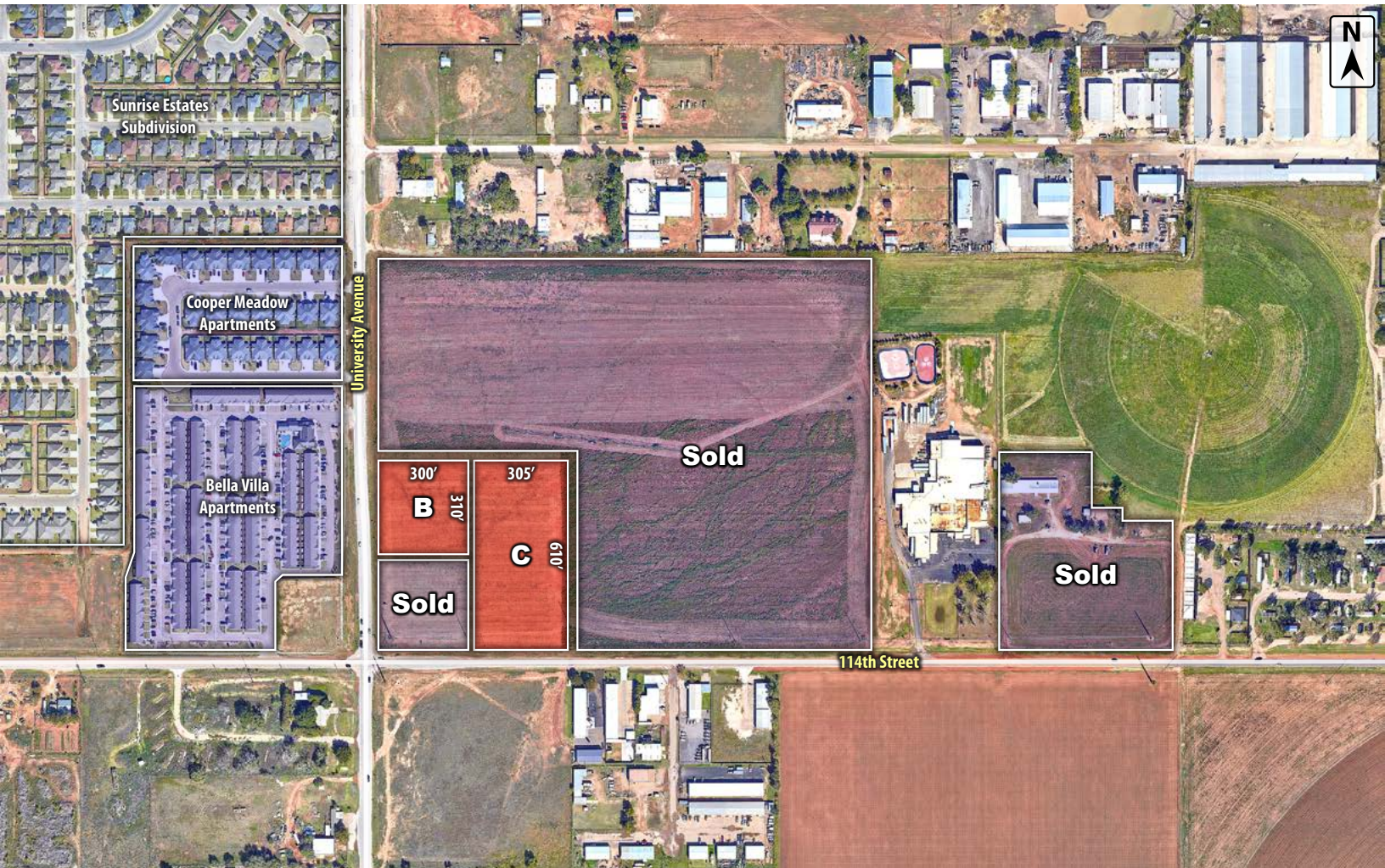
AARON HART
806.784.3254
AHART@CBCWORLDWIDE.COM
CBCLANDMAN.COM



**COLDWELL BANKER
COMMERCIAL**
CAPITAL ADVISORS



TRADE AREA & INFORMATION



LOCATION

Located in the northeast corner of 114th Street & University Avenue in Lubbock, TX.

DESCRIPTION

Discover an incredible opportunity in south Lubbock with large development tracts conveniently positioned between Loop 289, Interstate 27, and the upcoming Loop 88. With easy access to major highways, residents and businesses alike can enjoy seamless connectivity. Within a 5-minute drive, popular retail destinations like Super Walmart, Walmart Neighborhood, HEB, and United Supermarkets offer a thriving customer base. Additionally, Texas Tech University, University Medical Center, and Covenant Health Systems are a mere 15-minute drive away, providing access to renowned educational and healthcare institutions. Capitalize on this prime location to be part of south Lubbock's promising growth and success. Properties are not in the floodplain.

OPTIONS

- Tract A - 2.07 Acres - Sold
- Tract B - 2.13 Acres - \$7.00 per Square Foot
- Tract C - 4.27 Acres - \$5.75 per Square Foot
- Tract D - 37.00 Acres - Sold
- Tract E - 5.84 Acres - Sold



**COLDWELL BANKER
COMMERCIAL**
CAPITAL ADVISORS

This map illustrates the spatial extent of the study area around Lubbock, Texas. The city of Lubbock is at the center, with three concentric circles representing buffer zones of 1 mile, 3 miles, and 5 miles. The 1-mile buffer is the innermost circle, followed by the 3-mile buffer, and the 5-mile buffer is the outermost circle. The map shows the city's location relative to major highways (Interstates 40, 70, and 80) and surrounding towns (Shallowater, Dalhart, Amarillo, and Slaton). The map also includes a north arrow and a scale bar.



\$173,722



COLDWELL BANKER
COMMERCIAL
CAPITAL ADVISORS