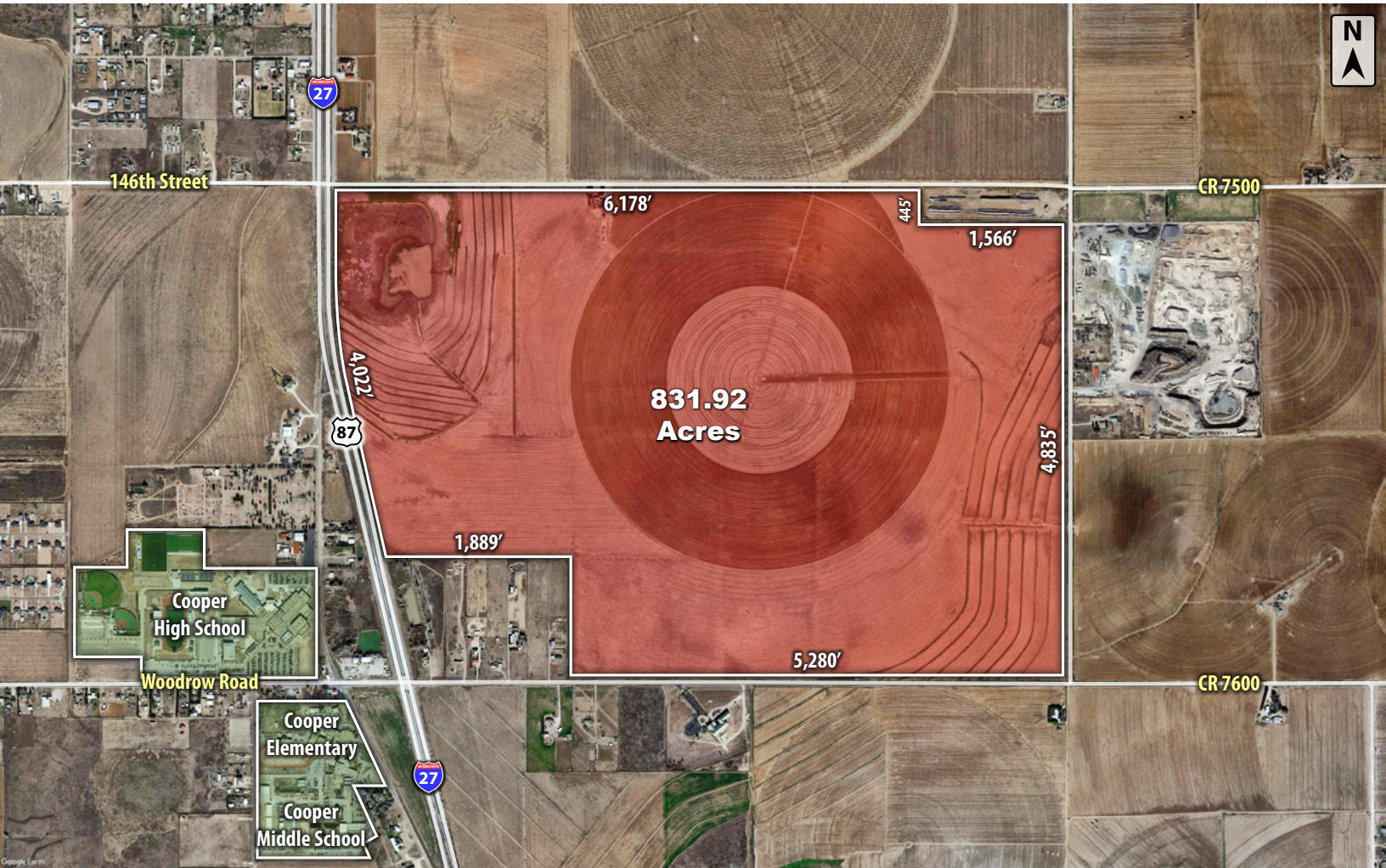




# NEQ INTERSTATE 27 & WOODROW ROAD

Lubbock, TX 79423

LAND



## QUICK FACTS



PURCHASE PRICE  
**Call Broker**



TOTAL ACREAGE  
**831 AC**



ZONING  
**County Land**



TRAFFIC COUNT  
**20,000 VPD**

CBCWORLDWIDE.COM

Beau Tucker, CCIM  
806.470.3944  
BTucker@CBCWorldwide.com  
CBCLandMan.com



**COLDWELL  
BANKER  
COMMERCIAL**

CAPITAL ADVISORS



## Trade Area & Information



## LOCATION

Located one mile outside the Lubbock city limits at the northeast corner of Interstate 27 & Woodrow Road.

## DESCRIPTION

The largest contiguous development tract available in the immediate Lubbock area (as of the time of writing). This tract is conveniently positioned 1 mile outside the current city limits on Interstate 27 between Lubbock and Tahoka. 6 miles away from Loop 289 and only 2 miles away from the developing Loop 88 make this an ideal location for subdivision and multi-use development. Texas Tech University, University Medical Center, & Covenant Health Systems are only a 10-15 minute drive away.

Small portions of the property are in the floodplain.

## OPTIONS

831.92 Acres - Call Broker for Pricing and Availability

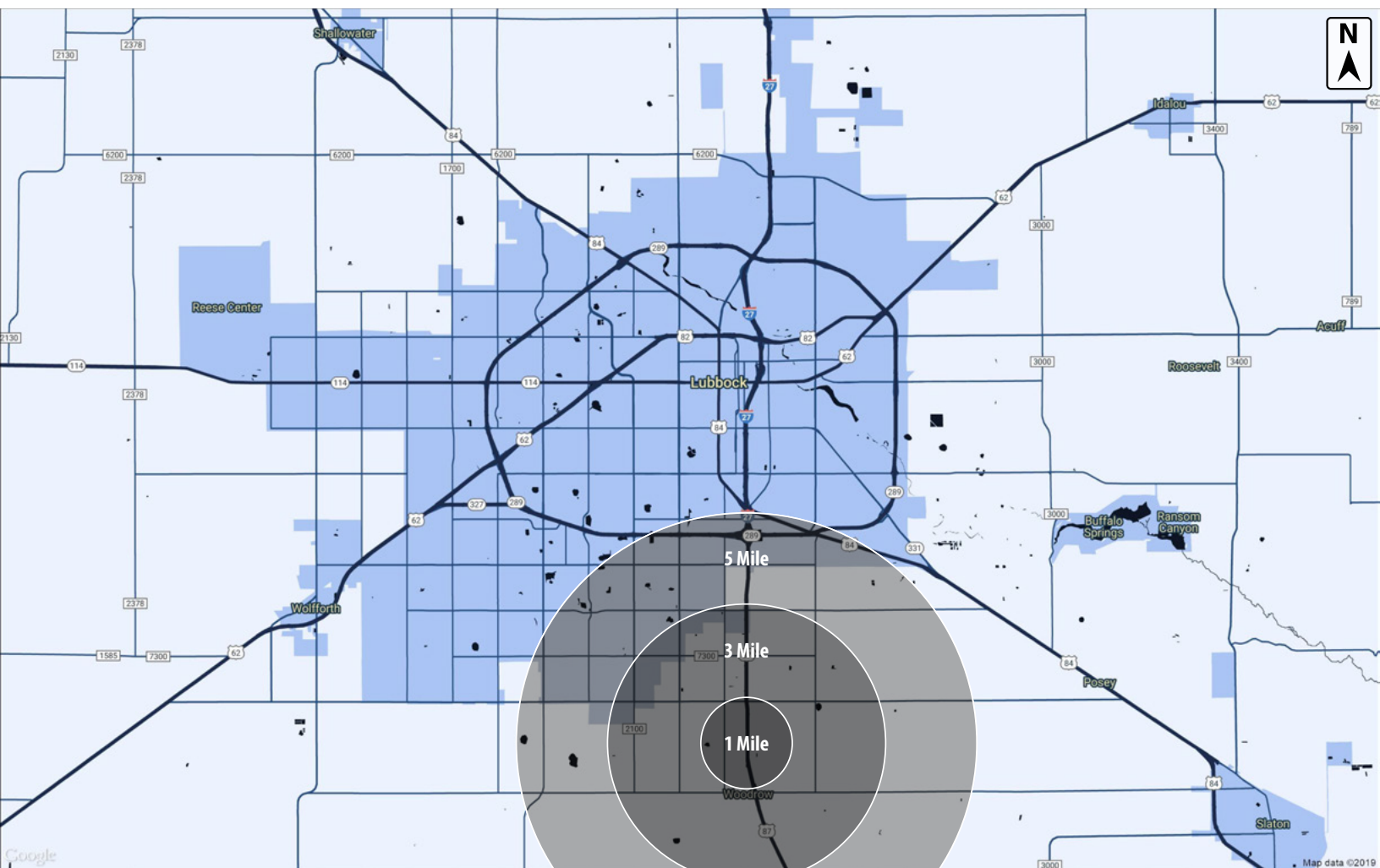


**COLDWELL  
BANKER  
COMMERCIAL**

CAPITAL ADVISORS



## Demographics



### POPULATION

	1 MILE	3 MILES	5 MILES
TOTAL POPULATION	546	9,255	48,811
MEDIAN AGE	34.3	33.6	34.7
MEDIAN AGE (MALE)	34.2	33.4	34.2
MEDIAN AGE (FEMALE)	34.5	33.7	35.3

### HOUSEHOLDS & INCOME

	1 MILE	3 MILES	5 MILES
TOTAL HOUSEHOLDS	196	3,429	18,731
# OF PERSONS PER HH	2.78	2.70	2.56
AVERAGE HH INCOME	\$149,005	\$94,908	\$97,644
AVERAGE HOUSE VALUE	\$292,078	\$195,859	\$181,181

CBCWORLDWIDE.COM

Beau Tucker, CCIM  
806.470.3944  
BTucker@CBCWorldwide.com  
CBCLandMan.com

©2020 Coldwell Banker Real Estate LLC, dba Coldwell Banker Commercial Capital Advisors. All rights reserved. Coldwell Banker Commercial® and the Coldwell Banker Commercial are registered service marks owned by Coldwell Banker Real Estate LLC. Coldwell Banker Real Estate LLC, dba Coldwell Banker Commercial Affiliates fully supports the principles of the Fair Housing Act and the Equal Opportunity Act. Each office is independently owned and operated. The information provided is deemed reliable, but it is not guaranteed to be accurate or complete, and it should not be relied upon as such. This information should be independently verified before any person enters into a transaction based upon it.



**COLDWELL  
BANKER  
COMMERCIAL**

**CAPITAL ADVISORS**