



# SEC MARSHA SHARP HIGHWAY & DOWDEN ROAD

Lubbock County, TX 79382

LAND



## QUICK FACTS



PURCHASE PRICE  
**See Brochure**



TOTAL ACREAGE  
**1-12 AC**



ZONING  
**Commercial**



TRAFFIC COUNT  
**20,000+ VPD**

CBCWORLDWIDE.COM

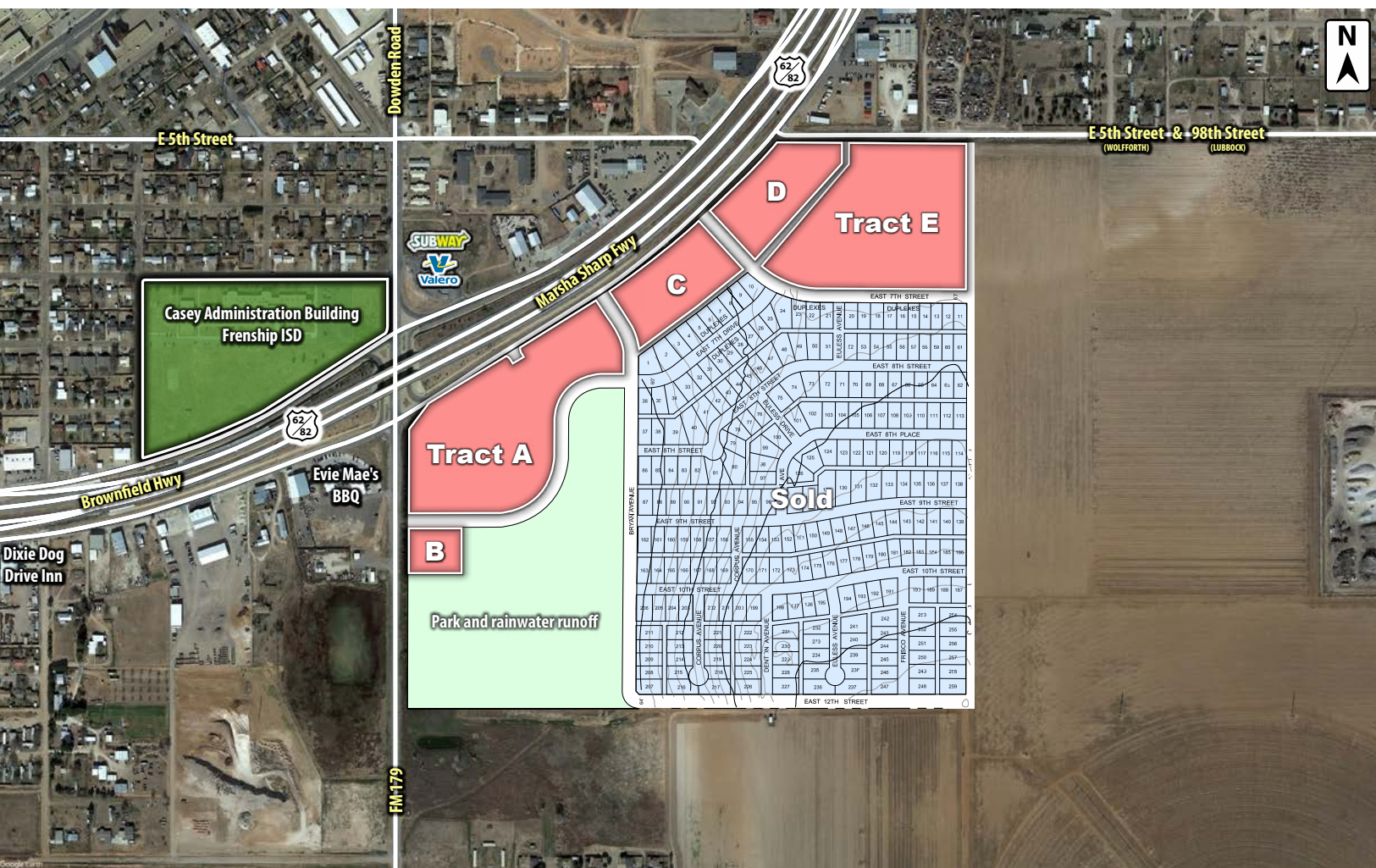
Beau Tucker, CCIM  
806.470.3944  
BTucker@CBCWorldwide.com  
CBCLandMan.com

 **COLDWELL  
BANKER  
COMMERCIAL**  
CAPITAL ADVISORS





## Trade Area & Information



## LOCATION

Located on the Brownfield Highway in between FM 179 & E 5th Street in Wolfforth.

## DESCRIPTION

Large commercial tracts of land available in Wolfforth's newest and largest multi-use development. This project will feature 20 acres for commercial retail and office, 11 acres for multifamily, a 66-acre 259 home proposed subdivision and dedicated land for parks and water runoff. All of Wolfforth and southwest Lubbock are easily accessible from the development and some tracts will need to be built up out of the floodplain.

## OPTIONS

- Tract A - 11.9 Acres - \$13.00 per Square Foot
- Tract B - 1.2 Acres - \$10.00 per Square Foot
- Tract C - 3.9 Acres - \$12.00 per Square Foot
- Tract D - 3.9 Acres - \$12.00 per Square Foot
- Tract E - 11.8 Acres - \$3.50 per Square Foot
- Tract F - Approx. 66 Acres - Sold

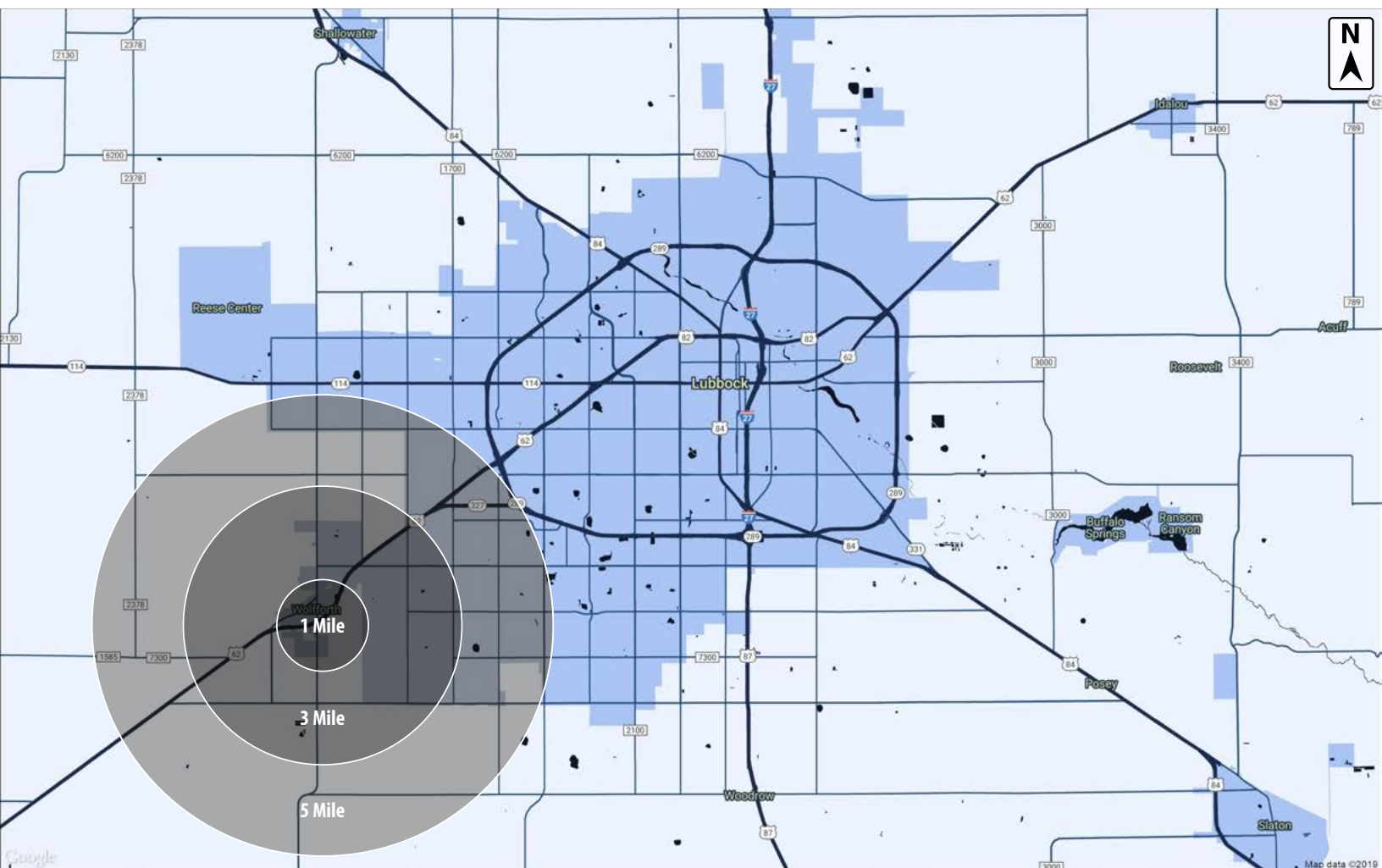


**COLDWELL  
BANKER  
COMMERCIAL**

CAPITAL ADVISORS



## Demographics



### POPULATION

	1 MILE	3 MILES	5 MILES
TOTAL POPULATION	400	21,962	86,898
MEDIAN AGE	31.4	30.5	32.4
MEDIAN AGE (MALE)	26.0	29.9	31.7
MEDIAN AGE (FEMALE)	34.7	31.4	33.5

### HOUSEHOLDS & INCOME

	1 MILE	3 MILES	5 MILES
TOTAL HOUSEHOLDS	125	8,510	35,784
# OF PERSONS PER HH	3.2	2.6	2.4
AVERAGE HH INCOME	\$96,285	\$69,586	\$62,379
AVERAGE HOUSE VALUE	\$206,003	\$152,791	\$144,282

CBCWORLDWIDE.COM

Beau Tucker, CCIM  
806.470.3944  
BTucker@CBCWorldwide.com  
CBCLandMan.com

©2020 Coldwell Banker Real Estate LLC, dba Coldwell Banker Commercial Capital Advisors. All rights reserved. Coldwell Banker Commercial® and the Coldwell Banker Commercial are registered service marks owned by Coldwell Banker Real Estate LLC. Coldwell Banker Real Estate LLC, dba Coldwell Banker Commercial Affiliates fully supports the principles of the Fair Housing Act and the Equal Opportunity Act. Each office is independently owned and operated. The information provided is deemed reliable, but it is not guaranteed to be accurate or complete, and it should not be relied upon as such. This information should be independently verified before any person enters into a transaction based upon it.



**COLDWELL  
BANKER  
COMMERCIAL**

**CAPITAL ADVISORS**