



Lubbock, TX 79423



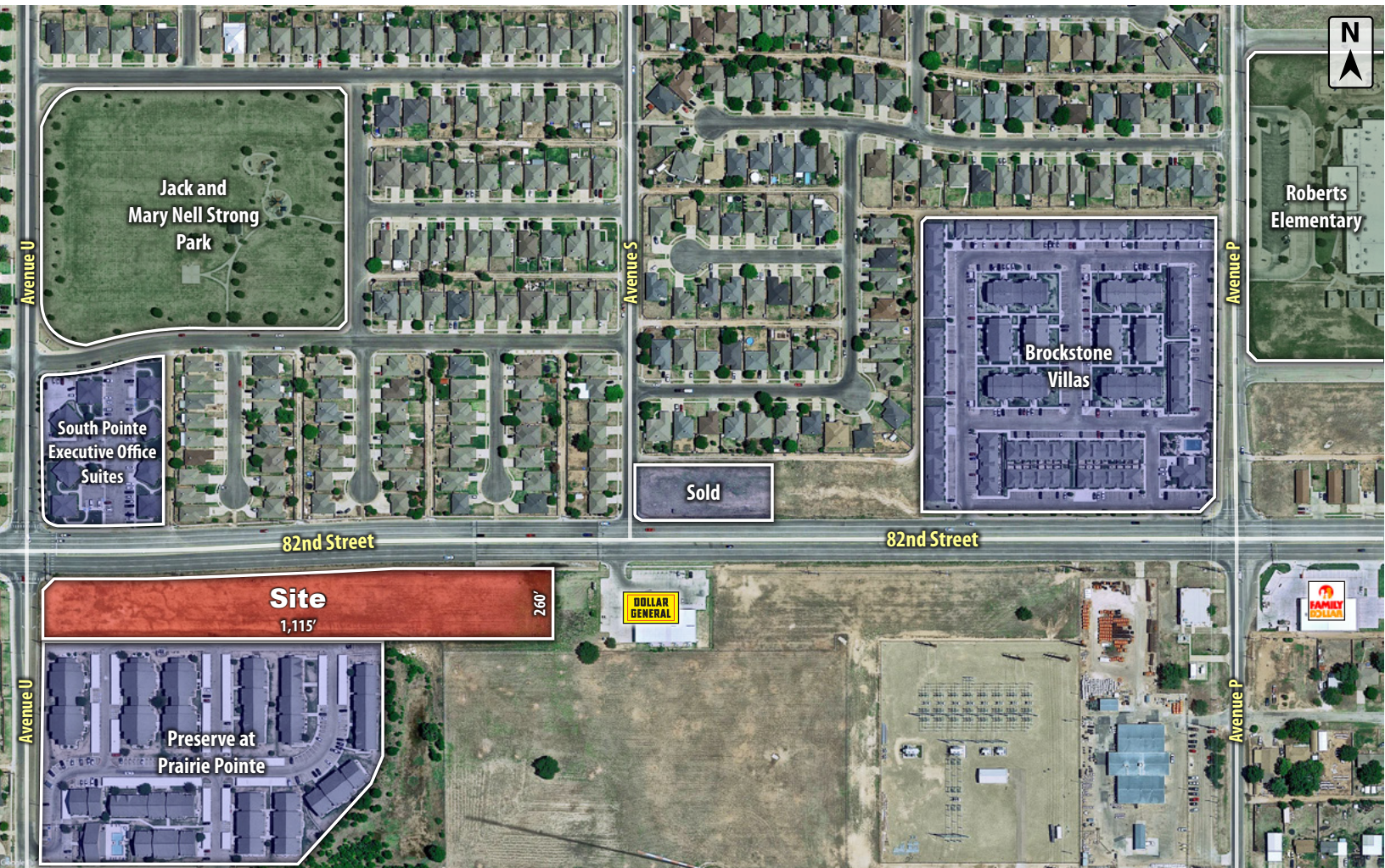
Beau Tucker, CCIM
806.470.3944
BTucker@CBCWorldwide.com
CBCLandMan.com



CAPITAL ADVISORS



Trade Area & Information



LOCATION

Located at the southeast corner of 82nd Street and Avenue U in Lubbock, TX.

DESCRIPTION

A large tract in southeast Lubbock. Conveniently located between Interstate 27, Loop 289 and University Avenue. Also a quick 1-minute drive from the 82nd & University Retail Corridor.

Less than 1% in floodplain.

Zoned C-2 (Local Retail)

OPTIONS

3.77 Acres - \$4.50 per Square Foot

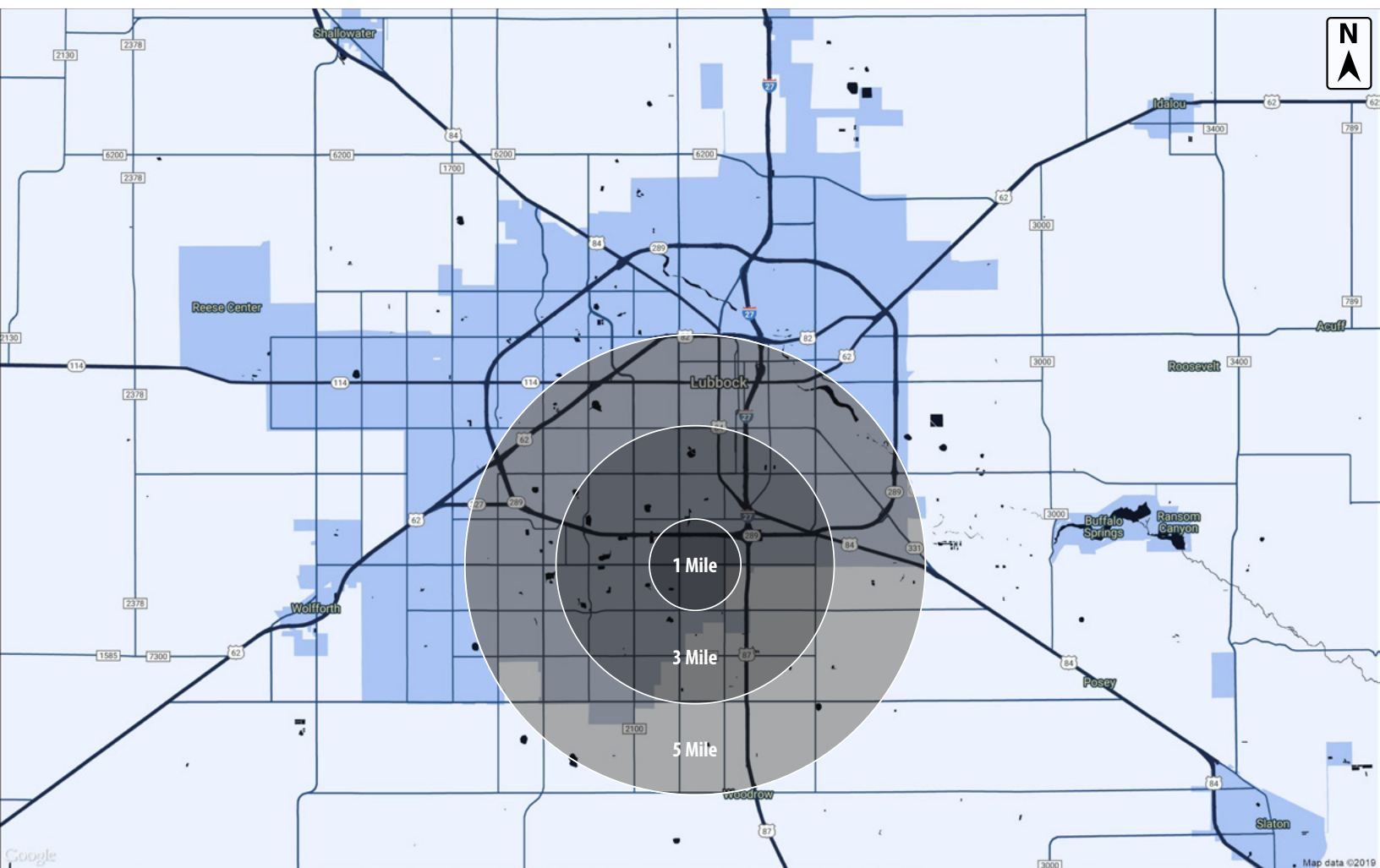


**COLDWELL
BANKER
COMMERCIAL**

CAPITAL ADVISORS



Demographics



POPULATION

	1 MILE	3 MILES	5 MILES
TOTAL POPULATION	4,644	39,995	111,594
MEDIAN AGE	25.4	25.2	27.2
MEDIAN AGE (MALE)	25.6	25.2	26.6
MEDIAN AGE (FEMALE)	25.3	25.3	28.3

HOUSEHOLDS & INCOME

	1 MILE	3 MILES	5 MILES
TOTAL HOUSEHOLDS	1,614	12,712	40,966
# OF PERSONS PER HH	2.9	3.1	2.7
AVERAGE HH INCOME	\$38,937	\$50,296	\$48,799
AVERAGE HOUSE VALUE	\$115,353	\$143,977	\$136,106

CBCWORLDWIDE.COM

Beau Tucker, CCIM
806.470.3944
BTucker@CBCWorldwide.com
CBCLandMan.com

©2020 Coldwell Banker Real Estate LLC, dba Coldwell Banker Commercial Capital Advisors. All rights reserved. Coldwell Banker Commercial® and the Coldwell Banker Commercial are registered service marks owned by Coldwell Banker Real Estate LLC. Coldwell Banker Real Estate LLC, dba Coldwell Banker Commercial Affiliates fully supports the principles of the Fair Housing Act and the Equal Opportunity Act. Each office is independently owned and operated. The information provided is deemed reliable, but it is not guaranteed to be accurate or complete, and it should not be relied upon as such. This information should be independently verified before any person enters into a transaction based upon it.



**COLDWELL
BANKER
COMMERCIAL**

CAPITAL ADVISORS