



## SWC E 100TH & LOOP 338

Odessa, TX 79762

LAND



## QUICK FACTS



PURCHASE PRICE  
**\$8.00 per SF**



TOTAL ACREAGE  
**7.56 AC**



ZONING  
**Commercial**



TRAFFIC COUNT  
**5,000+ VPD**

[CBCWORLDWIDE.COM](http://CBCWORLDWIDE.COM)

Beau Tucker, CCIM  
806.470.3944  
[BTucker@CBCWorldwide.com](mailto:BTucker@CBCWorldwide.com)  
[CBCLandMan.com](http://CBCLandMan.com)



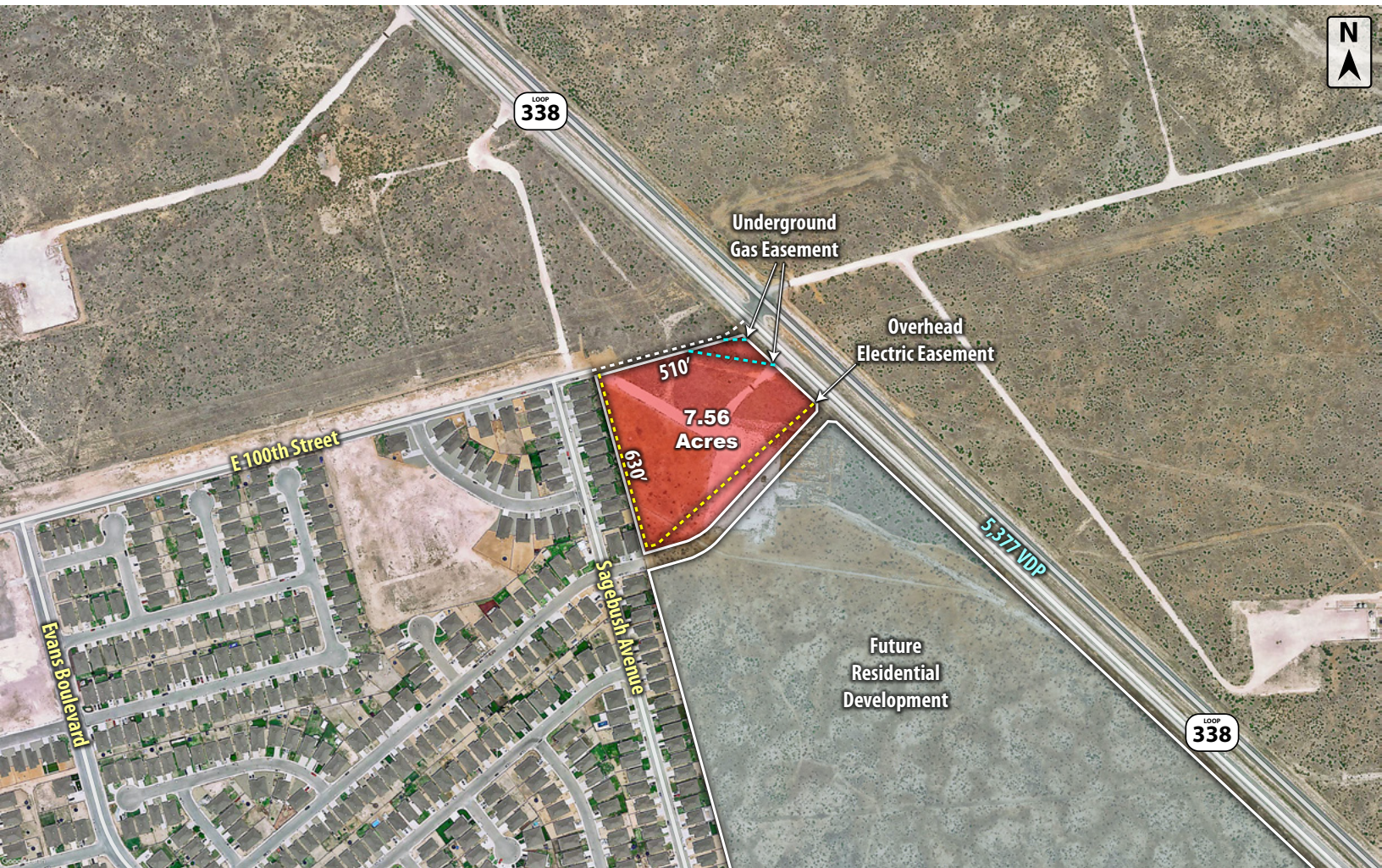
**COLDWELL  
BANKER  
COMMERCIAL**

**CAPITAL ADVISORS**





## Trade Area & Information



## LOCATION

Located at the southwest corner of 110th Street & Loop 338 in Odessa, TX.

## DESCRIPTION

Large development tract available in growing north Odessa. This tract is conveniently positioned on Loop 338 adjacent to the currently developing subdivision North Par. This tract is located 1 mile from the Sunset Golf & Country Club, 1.5 miles from the airport, 2.5 miles from Ratliff Stadium and is only an 8-minute drive to the retail heart of Odessa.

Property is not in the floodplain.

## OPTIONS

7.56 Acres - \$8.00 per Square Foot



**COLDWELL  
BANKER  
COMMERCIAL**

CAPITAL ADVISORS





944	6,568	29,210
29.5	32.8	32.6
29.7	33.7	32.3
29.4	32.6	32.7

313	2,298	10,889
3.0	2.9	2.7
\$81,869	\$80,175	\$72,140
\$176,809	\$168,623	\$175,155

Beau Tucker, CCIM  
806.470.3944  
BTucker@CBCWorldwide.com  
CBCLandMan.com

©2020 Coldwell Banker Real Estate LLC, dba Coldwell Banker Commercial Capital Advisors. All rights reserved. Coldwell Banker Commercial® and the Coldwell Banker Commercial are registered service marks owned by Coldwell Banker Real Estate LLC. Coldwell Banker Real Estate LLC, dba Coldwell Banker Commercial Affiliates fully supports the principles of the Fair Housing Act and the Equal Opportunity Act. Each office is independently owned and operated. The information provided is deemed reliable, but it is not guaranteed to be accurate or complete, and it should not be relied upon as such. This information should be independently verified before any person enters into a transaction based upon it.

**COLDWELL  
BANKER  
COMMERCIAL**

## CAPITAL ADVISORS