



Lubbock, TX 79424



Beau Tucker, CCIM
806.470.3944
BTucker@CBCWorldwide.com



CAPITAL ADVISORS



Trade Area & Information



LOCATION

Located in the northwest quadrant of 110th Street & Milwaukee Avenue.

DESCRIPTION

Large development tract available in growing southwest Lubbock. This tract is conveniently positioned between the booming Milwaukee Corridor and the future Loop 88 (construction began 2019). 2-minutes away from the Milwaukee Corridor, including Walmart and the new 800,000+ square foot mixed-use retail center Canyon West. Texas Tech University, University Medical Center, & Covenant Health Systems are only a 12-minute drive away.

Property is not in the floodplain.

OPTIONS

15 Acres \$1.65 per Square Foot

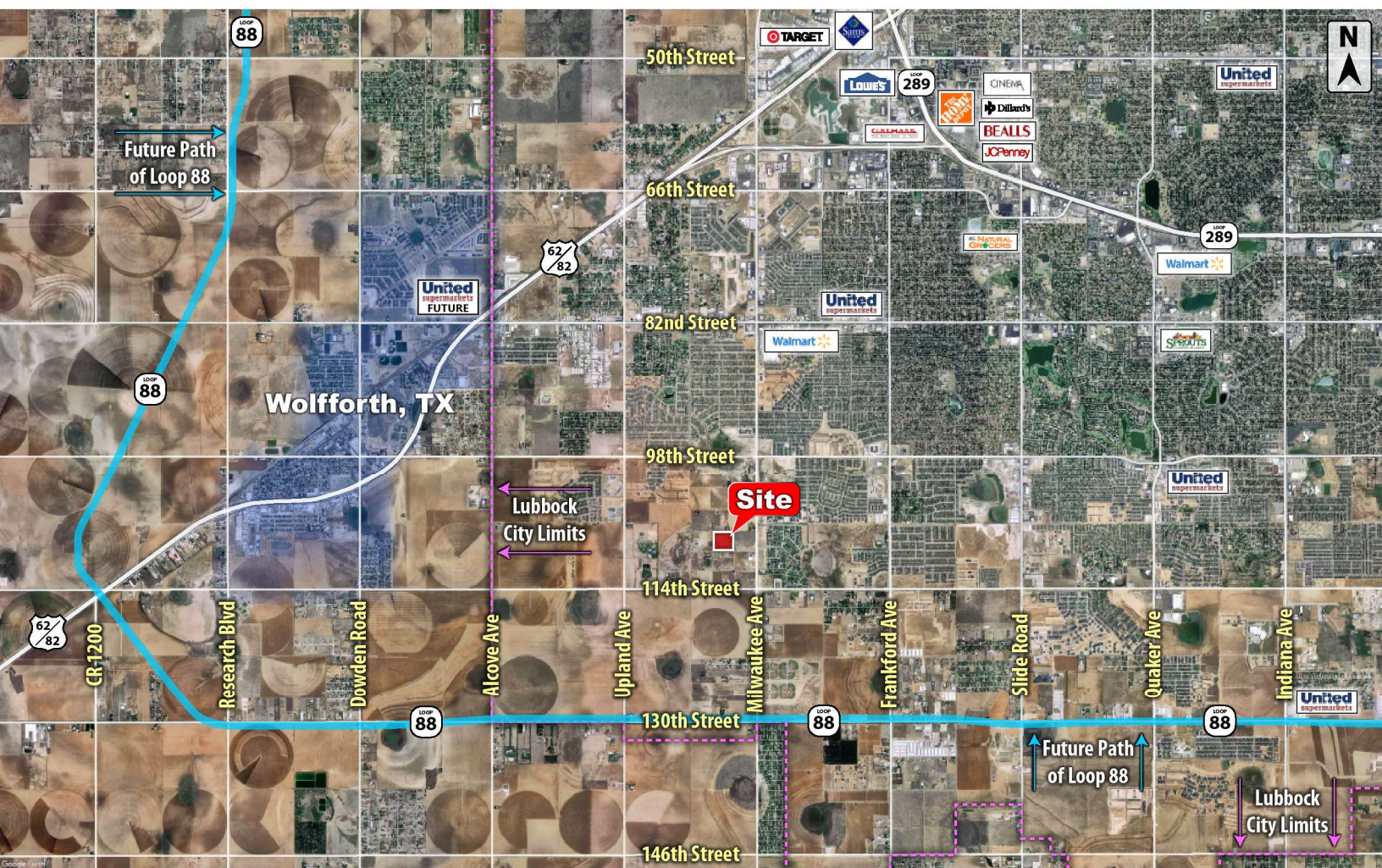


**COLDWELL
BANKER
COMMERCIAL**

CAPITAL ADVISORS



Demographics



POPULATION

| | | | |
|---------------------|-------|--------|--------|
| TOTAL POPULATION | 1,106 | 28,254 | 80,410 |
| MEDIAN AGE | 32.0 | 37.9 | 36.5 |
| MEDIAN AGE (MALE) | 32.5 | 37.1 | 35.5 |
| MEDIAN AGE (FEMALE) | 32.5 | 38.1 | 37.3 |

HOUSEHOLDS & INCOME

| | | | |
|---------------------|-----------|-----------|-----------|
| TOTAL HOUSEHOLDS | 370 | 11,147 | 33,396 |
| # OF PERSONS PER HH | 3.0 | 2.5 | 2.4 |
| AVERAGE HH INCOME | \$104,208 | \$90,429 | \$77,602 |
| AVERAGE HOUSE VALUE | \$206,678 | \$178,760 | \$164,617 |

CBCWORLDWIDE.COM

Beau Tucker, CCIM
806.470.3944
BTucker@CBCWorldwide.com

©2019 Coldwell Banker Real Estate LLC, dba Coldwell Banker Commercial Capital Advisors. All rights reserved. Coldwell Banker Commercial and the Coldwell Banker Commercial are registered service marks owned by Coldwell Banker Real Estate LLC. Coldwell Banker Real Estate LLC, dba Coldwell Banker Commercial Affiliates fully supports the principles of the Fair Housing Act and the Equal Opportunity Act. Each office is independently owned and operated. The information provided is deemed reliable, but it is not guaranteed to be accurate or complete, and it should not be relied upon as such. This information should be independently verified before any person enters into a transaction based upon it.



**COLDWELL
BANKER
COMMERCIAL**

CAPITAL ADVISORS