



# SWQ HWY 84 & DIVISION STREET

Slaton, TX 79364

LAND



## QUICK FACTS



PURCHASE PRICE  
**\$9,500 per Acre**



TOTAL ACREAGE  
**108 AC**



ZONING  
**Commercial**



TRAFFIC COUNT  
**14,500+ VPD**

CBCWORLDWIDE.COM

Beau Tucker, CCIM  
806.470.3944  
BTucker@CBCWorldwide.com



**COLDWELL  
BANKER  
COMMERCIAL**

CAPITAL ADVISORS





## Trade Area & Information



## LOCATION

Located in the southwest quadrant of Highway 84 & Division Street in Slaton, TX.

## DESCRIPTION

Large development tract available in Slaton's most trafficked area with 14,639 VPD. 107.82 acres with highway frontage creating a prime opportunity for multiuse development. Only 7.5 miles away from Lubbock, TX. The Lubbock MSA has a 2020 estimated population of 331,503.

Property is not in the floodplain.

## OPTIONS

107.82 Acres - \$9,500 per Acre



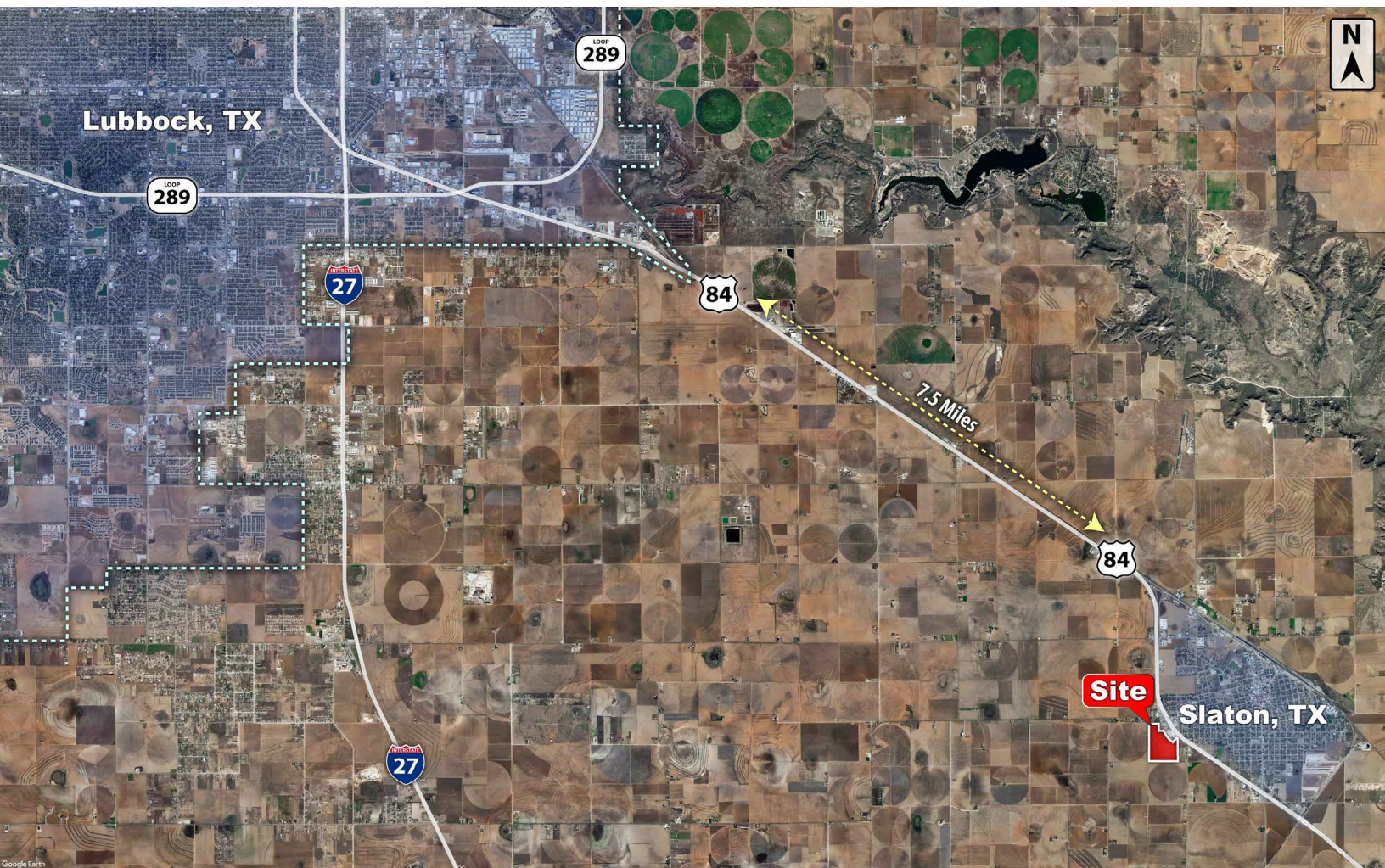
**COLDWELL  
BANKER  
COMMERCIAL**

CAPITAL ADVISORS





## Demographics



### POPULATION

	1 MILE	3 MILES	5 MILES
TOTAL POPULATION	2,146	6,092	6,537
MEDIAN AGE	31.4	30.5	32.4
MEDIAN AGE (MALE)	26.0	29.9	31.7
MEDIAN AGE (FEMALE)	34.7	31.4	33.5

### HOUSEHOLDS & INCOME

	1 MILE	3 MILES	5 MILES
TOTAL HOUSEHOLDS	125	8,510	35,784
# OF PERSONS PER HH	3.2	2.6	2.4
AVERAGE HH INCOME	\$69,702	\$62,975	\$66,592
AVERAGE HOUSE VALUE	\$88,806	\$81,751	\$89,091

CBCWORLDWIDE.COM

Beau Tucker, CCIM  
806.470.3944  
BTucker@CBCWorldwide.com

©2020 Coldwell Banker Real Estate LLC, dba Coldwell Banker Commercial Capital Advisors. All rights reserved. Coldwell Banker Commercial® and the Coldwell Banker Commercial are registered service marks owned by Coldwell Banker Real Estate LLC. Coldwell Banker Real Estate LLC, dba Coldwell Banker Commercial Affiliates fully supports the principles of the Fair Housing Act and the Equal Opportunity Act. Each office is independently owned and operated. The information provided is deemed reliable, but it is not guaranteed to be accurate or complete, and it should not be relied upon as such. This information should be independently verified before any person enters into a transaction based upon it.



**COLDWELL  
BANKER  
COMMERCIAL**

**CAPITAL ADVISORS**