



137TH STREET & SLIDE ROAD

Lubbock, TX 79424

LAND



QUICK FACTS



PURCHASE PRICE

Call Broker



TOTAL ACREAGE

6.16 AC



ZONING

General Retail (C-3)

CBCWORLDWIDE.COM

Beau Tucker, CCIM
806.470.3944
BTucker@CBCWorldwide.com
CBCLandMan.com

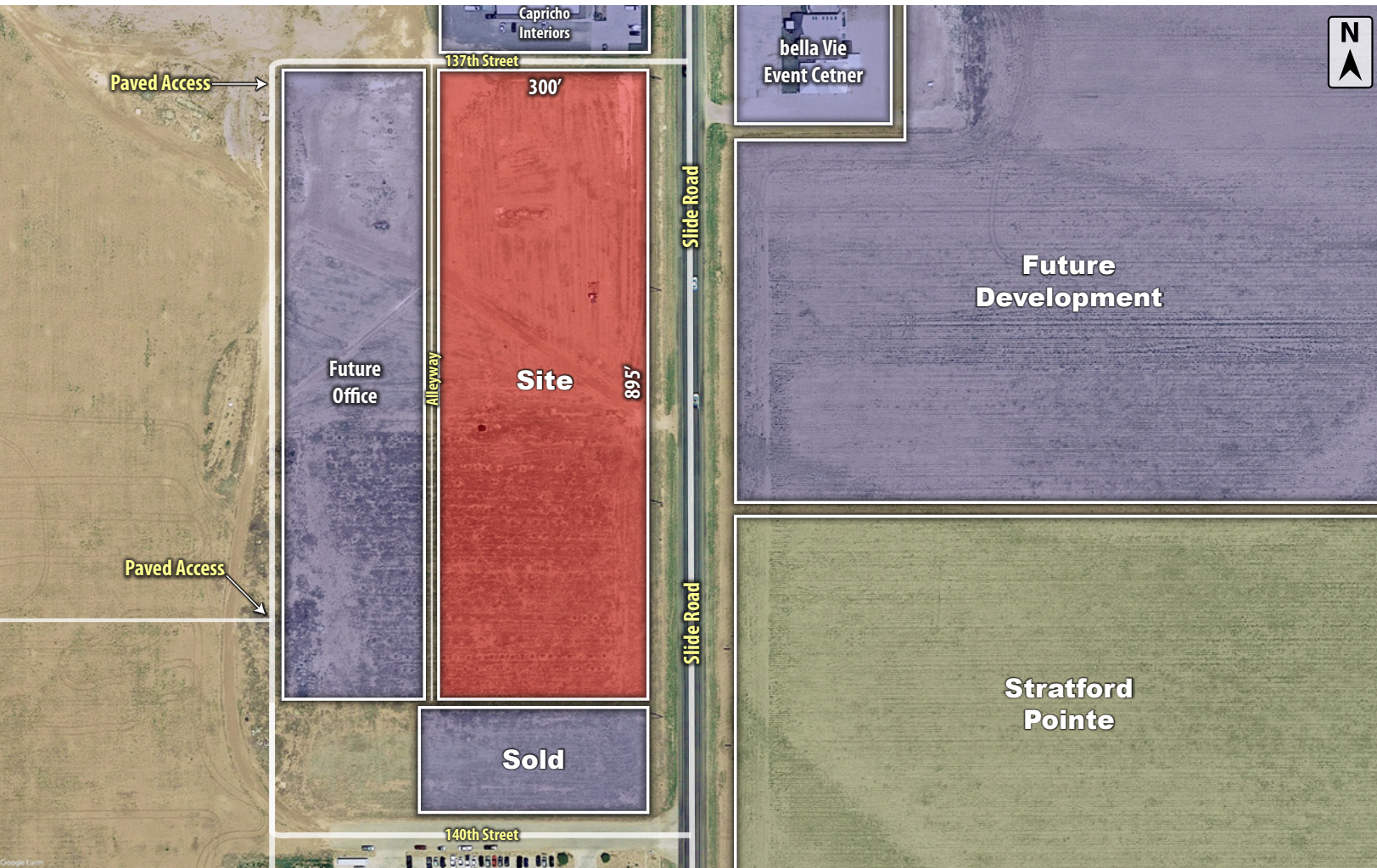


**COLDWELL
BANKER
COMMERCIAL**

CAPITAL ADVISORS



Trade Area & Information



LOCATION

This property sits between 130th Street & 146th Street on the west side of Slide Road just inside the southwest city limits.

DESCRIPTION

A large commercial tract in developing southwest Lubbock. Conveniently located in the Cooper School District and directly south of the new Loop 88 (broke ground 2018). This land is ideal for future developments.

City utilities were extended to site Q1 2019.

Property is not in the floodplain.

OPTIONS

6.16 Acres - Sale, Build-to-Suit, & Ground Lease are available
(can be subdivided into 1 Acre tracts)



**COLDWELL
BANKER
COMMERCIAL**

CAPITAL ADVISORS

This map illustrates the spatial distribution of the 1-mile, 3-mile, and 5-mile buffer zones around the city of Lubbock, Texas. The city center is marked with a black dot. The 1-mile buffer is represented by a small white circle, the 3-mile buffer by a medium gray circle, and the 5-mile buffer by a large dark gray circle. The map shows the city's location relative to major highways (Interstates 40, 70, and 80; State Routes 84, 114, 160, 289, 337, 380, 62, 82, 87, 118, 120, 170, 214, 237, 281, 340, 369, 380, 390, 400, 405, 406, 407, 408, 409, 410, 411, 412, 413, 414, 415, 416, 417, 418, 419, 420, 421, 422, 423, 424, 425, 426, 427, 428, 429, 430, 431, 432, 433, 434, 435, 436, 437, 438, 439, 440, 441, 442, 443, 444, 445, 446, 447, 448, 449, 450, 451, 452, 453, 454, 455, 456, 457, 458, 459, 460, 461, 462, 463, 464, 465, 466, 467, 468, 469, 470, 471, 472, 473, 474, 475, 476, 477, 478, 479, 480, 481, 482, 483, 484, 485, 486, 487, 488, 489, 490, 491, 492, 493, 494, 495, 496, 497, 498, 499, 500, 501, 502, 503, 504, 505, 506, 507, 508, 509, 510, 511, 512, 513, 514, 515, 516, 517, 518, 519, 520, 521, 522, 523, 524, 525, 526, 527, 528, 529, 530, 531, 532, 533, 534, 535, 536, 537, 538, 539, 540, 541, 542, 543, 544, 545, 546, 547, 548, 549, 550, 551, 552, 553, 554, 555, 556, 557, 558, 559, 560, 561, 562, 563, 564, 565, 566, 567, 568, 569, 570, 571, 572, 573, 574, 575, 576, 577, 578, 579, 580, 581, 582, 583, 584, 585, 586, 587, 588, 589, 590, 591, 592, 593, 594, 595, 596, 597, 598, 599, 600, 601, 602, 603, 604, 605, 606, 607, 608, 609, 610, 611, 612, 613, 614, 615, 616, 617, 618, 619, 620, 621, 622, 623, 624, 625, 626, 627, 628, 629, 630, 631, 632, 633, 634, 635, 636, 637, 638, 639, 640, 641, 642, 643, 644, 645, 646, 647, 648, 649, 650, 651, 652, 653, 654, 655, 656, 657, 658, 659, 660, 661, 662, 663, 664, 665, 666, 667, 668, 669, 670, 671, 672, 673, 674, 675, 676, 677, 678, 679, 680, 681, 682, 683, 684, 685, 686, 687, 688, 689, 690, 691, 692, 693, 694, 695, 696, 697, 698, 699, 700, 701, 702, 703, 704, 705, 706, 707, 708, 709, 710, 711, 712, 713, 714, 715, 716, 717, 718, 719, 720, 721, 722, 723, 724, 725, 726, 727, 728, 729, 730, 731, 732, 733, 734, 735, 736, 737, 738, 739, 740, 741, 742, 743, 744, 745, 746, 747, 748, 749, 750, 751, 752, 753, 754, 755, 756, 757, 758, 759, 760, 761, 762, 763, 764, 765, 766, 767, 768, 769, 770, 771, 772, 773, 774, 775, 776, 777, 778, 779, 780, 781, 782, 783, 784, 785, 786, 787, 788, 789, 790, 791, 792, 793, 794, 795, 796, 797, 798, 799, 800, 801, 802, 803, 804, 805, 806, 807, 808, 809, 810, 811, 812, 813, 814, 815, 816, 817, 818, 819, 820, 821, 822, 823, 824, 825, 826, 827, 828, 829, 830, 831, 832, 833, 834, 835, 836, 837, 838, 839, 840, 841, 842, 843, 844, 845, 846, 847, 848, 849, 850, 851, 852, 853, 854, 855, 856, 857, 858, 859, 860, 861, 862, 863, 864, 865, 866, 867, 868, 869, 870, 871, 872, 873, 874, 875, 876, 877, 878, 879, 880, 881, 882, 883, 884, 885, 886, 887, 888, 889, 890, 891, 892, 893, 894, 895, 896, 897, 898, 899, 900, 901, 902, 903, 904, 905, 906, 907, 908, 909, 910, 911, 912, 913, 914, 915, 916, 917, 918, 919, 920, 921, 922, 923, 924, 925, 926, 927, 928, 929, 930, 931, 932, 933, 934, 935, 936, 937, 938, 939, 940, 941, 942, 943, 944, 945, 946, 947, 948, 949, 950, 951, 952, 953, 954, 955, 956, 957, 958, 959, 960, 961, 962, 963, 964, 965, 966, 967, 968, 969, 970, 971, 972, 973, 974, 975, 976, 977, 978, 979, 980, 981, 982, 983, 984, 985, 986, 987, 988, 989, 990, 991, 992, 993, 994, 995, 996, 997, 998, 999, 1000). The map also shows surrounding cities such as Shallowater, Reese Center, Wolforth, Woodville, Slaton, Posey, Ransom Canyon, Buffalo Springs, and Amarillo. A north arrow is located in the top right corner. The map data is from 2011.



5 MILES

328	12,191	66,544
36.6	40.4	39.3
36.8	38.8	38.1
36.0	41.8	40.0

5 MILES

TOTAL HOUSEHOLDS	105	4,807	27,697
# OF PERSONS PER HH	3.1	2.5	2.4
AVERAGE HH INCOME	\$91,399	\$109,346	\$84,801
AVERAGE HOUSE VALUE	\$228,972	\$173,312	\$166,504

Beau Tucker, CCIM
806.470.3944
BTucker@CBCWorldwide.com
CBCLandMan.com

©2020 Coldwell Banker Real Estate LLC, dba Coldwell Banker Commercial Capital Advisors. All rights reserved. Coldwell Banker Commercial® and the Coldwell Banker Commercial are registered service marks owned by Coldwell Banker Real Estate LLC. Coldwell Banker Real Estate LLC, dba Coldwell Banker Commercial Affiliates fully supports the principles of the Fair Housing Act and the Equal Opportunity Act. Each office is independently owned and operated. The information provided is deemed reliable, but it is not guaranteed to be accurate or complete, and it should not be relied upon as such. This information should be independently verified before any person enters into a transaction based upon it.

**COLDWELL
BANKER
COMMERCIAL**

CAPITAL ADVISORS