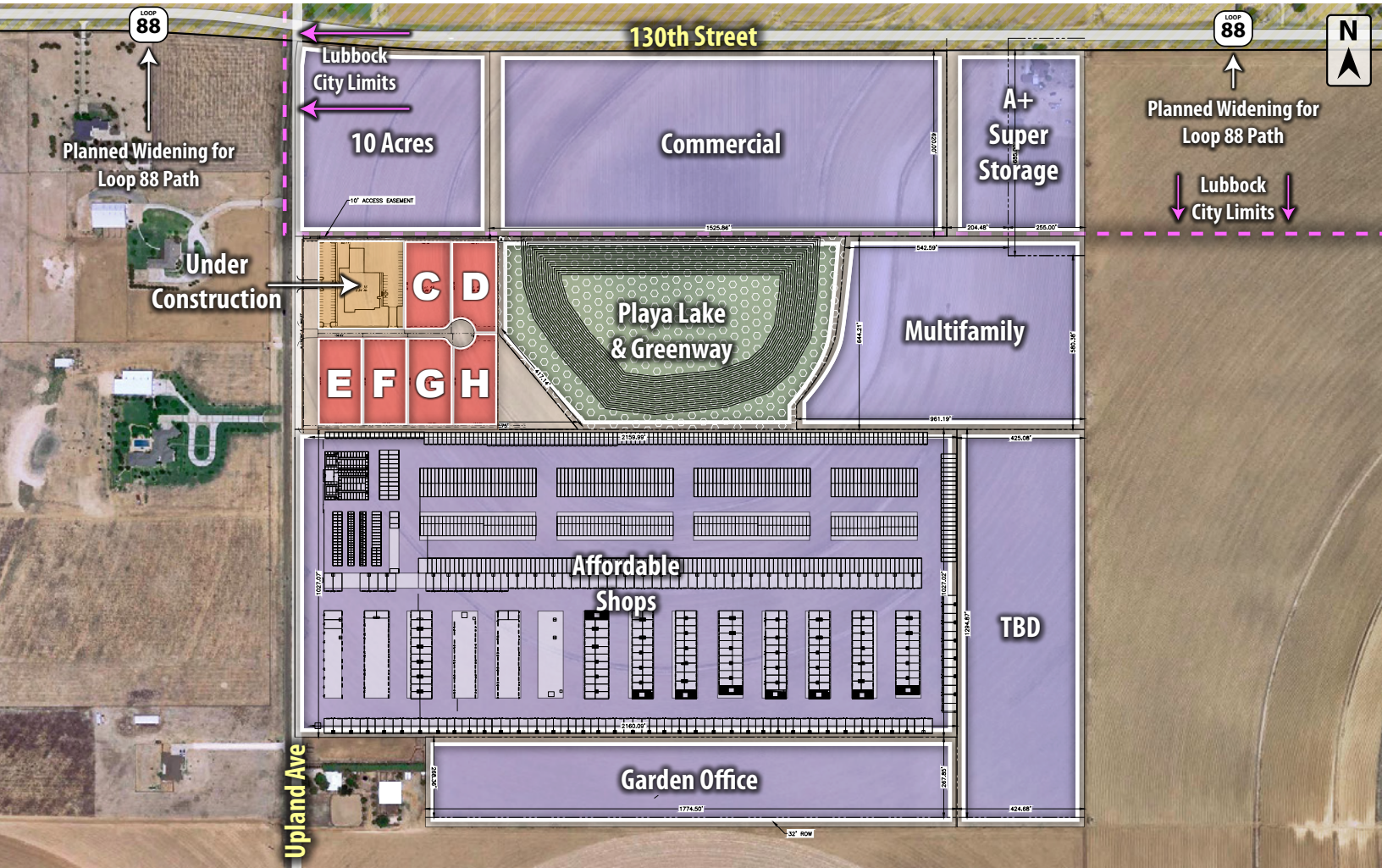




SEQ 130TH & UPLAND

Lubbock, TX 79424

LAND



QUICK FACTS



PURCHASE PRICE
\$3.50 - \$4.50 per SF



TOTAL ACREAGE
9.28 AC



ZONING
Commercial

CBCWORLDWIDE.COM

Beau Tucker, CCIM
806.470.3944
BTucker@CBCWorldwide.com
CBCLandMan.com

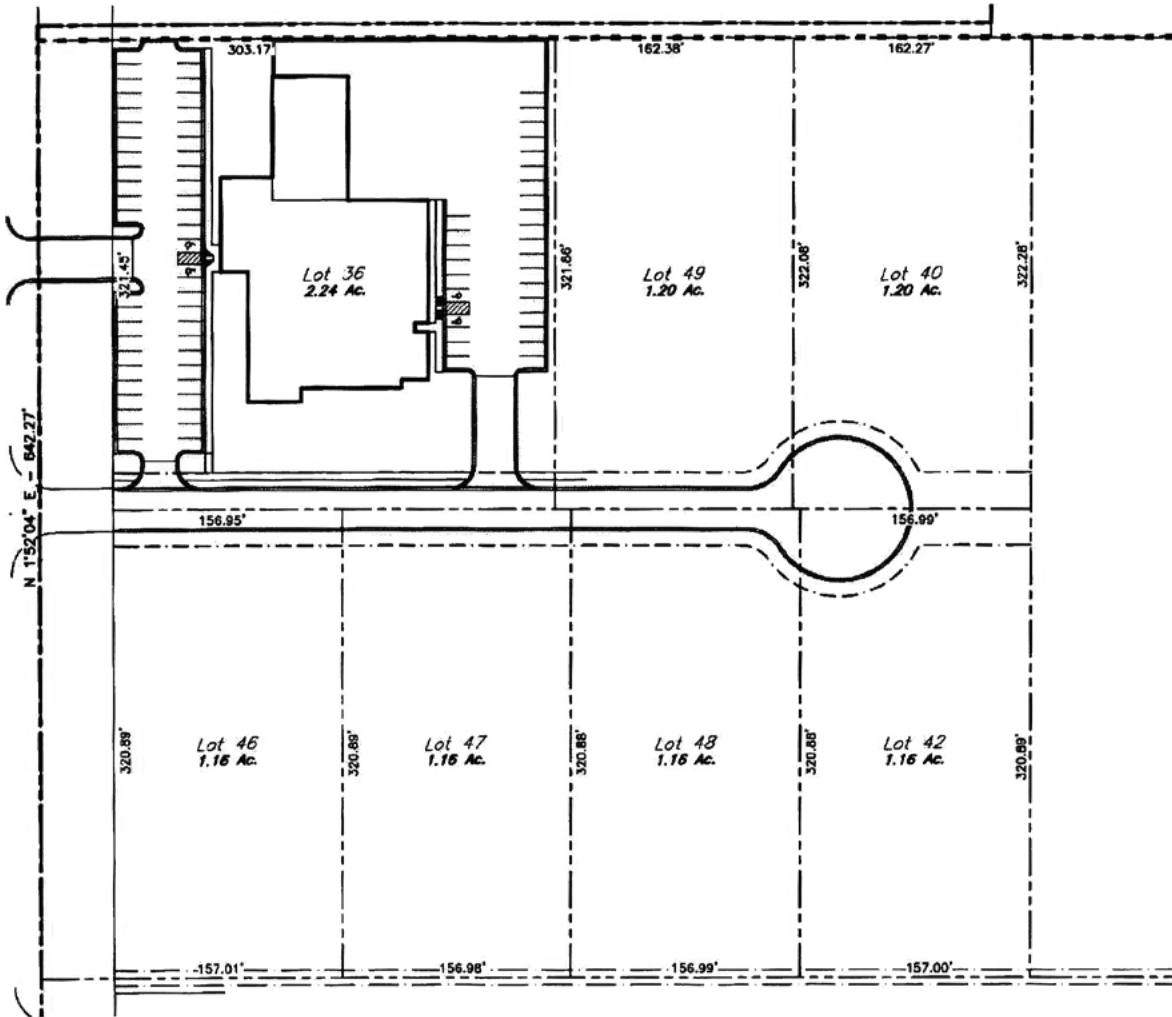


**COLDWELL
BANKER
COMMERCIAL**

CAPITAL ADVISORS



Trade Area & Information



LOCATION

This property sits in the southeast quadrant of 130th Street and Upland Avenue.

DESCRIPTION

A new mixed-use development in southwest Lubbock. Consisting of commercial and residential with Loop 88 frontage. Featuring a planned greenway development.

Properties will be built up out of the floodplain.

OPTIONS

Tract A & B - under construction
 Tract C - 1.20 Acres - \$3.50 per SF
 Tract D - 1.20 Acres - \$3.50 per SF
 Tract E - 1.16 Acres - \$4.50 per SF
 Tract F - 1.16 Acres - \$3.50 per SF
 Tract G - 1.16 Acres - \$3.50 per SF
 Tract H - 1.16 Acres - \$3.50 per SF

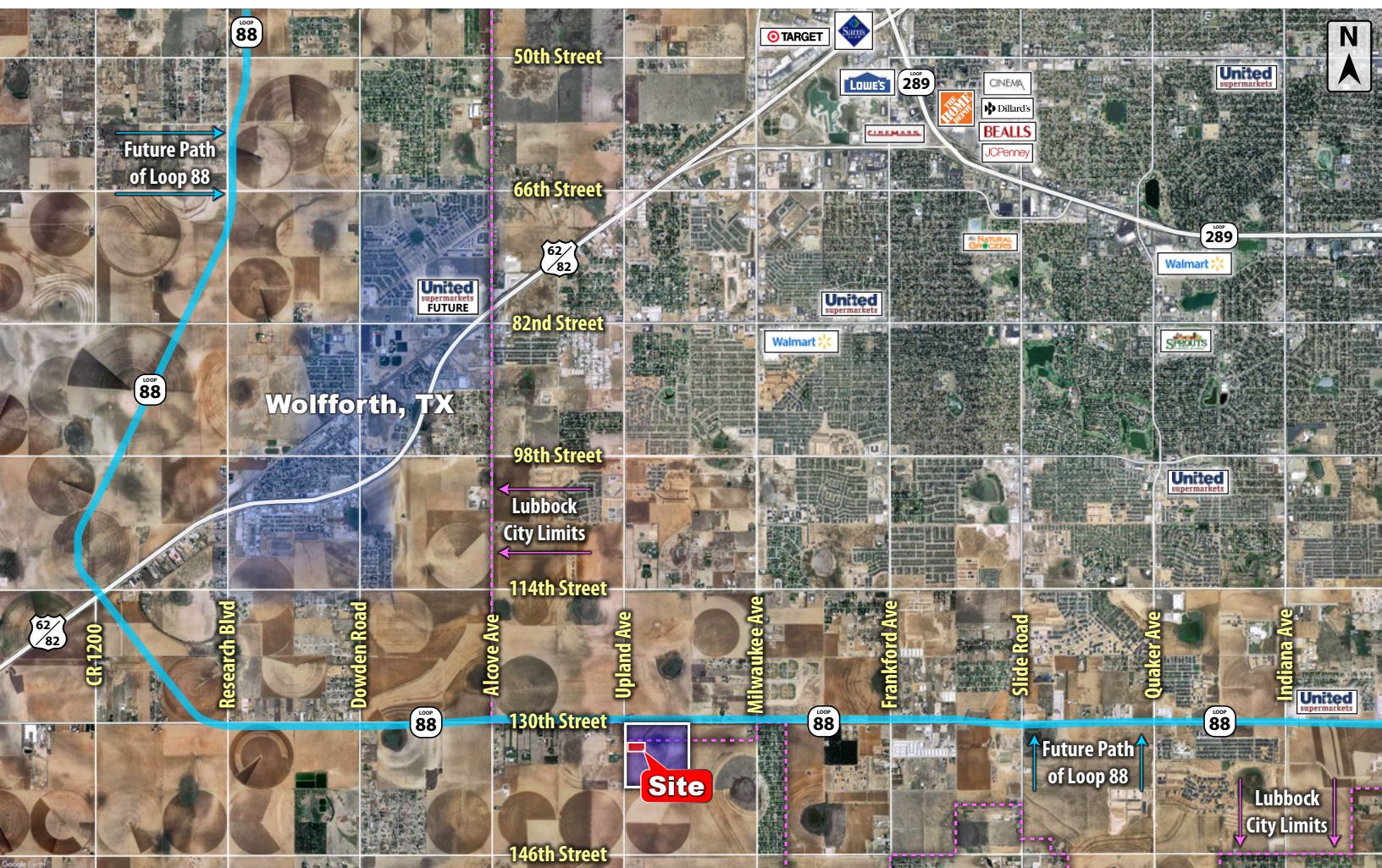


**COLDWELL
BANKER
COMMERCIAL**

CAPITAL ADVISORS



Demographics



POPULATION

	1 MILE	3 MILES	5 MILES
TOTAL POPULATION	367	8,107	40,682
MEDIAN AGE	34.1	32.7	37.5
MEDIAN AGE (MALE)	34.5	33.4	36.7
MEDIAN AGE (FEMALE)	32.9	31.6	37.7

HOUSEHOLDS & INCOME

	1 MILE	3 MILES	5 MILES
TOTAL HOUSEHOLDS	126	2,786	15,923
# OF PERSONS PER HH	2.9	2.9	2.6
AVERAGE HH INCOME	\$102,142	\$97,208	\$92,788
AVERAGE HOUSE VALUE	\$227,009	\$195,225	\$178,084

CBCWORLDWIDE.COM

Beau Tucker, CCIM
806.470.3944
BTucker@CBCWorldwide.com
CBCLandMan.com

©2020 Coldwell Banker Real Estate LLC, dba Coldwell Banker Commercial Capital Advisors. All rights reserved. Coldwell Banker Commercial® and the Coldwell Banker Commercial are registered service marks owned by Coldwell Banker Real Estate LLC. Coldwell Banker Real Estate LLC, dba Coldwell Banker Commercial Affiliates fully supports the principles of the Fair Housing Act and the Equal Opportunity Act. Each office is independently owned and operated. The information provided is deemed reliable, but it is not guaranteed to be accurate or complete, and it should not be relied upon as such. This information should be independently verified before any person enters into a transaction based upon it.



**COLDWELL
BANKER
COMMERCIAL**

CAPITAL ADVISORS