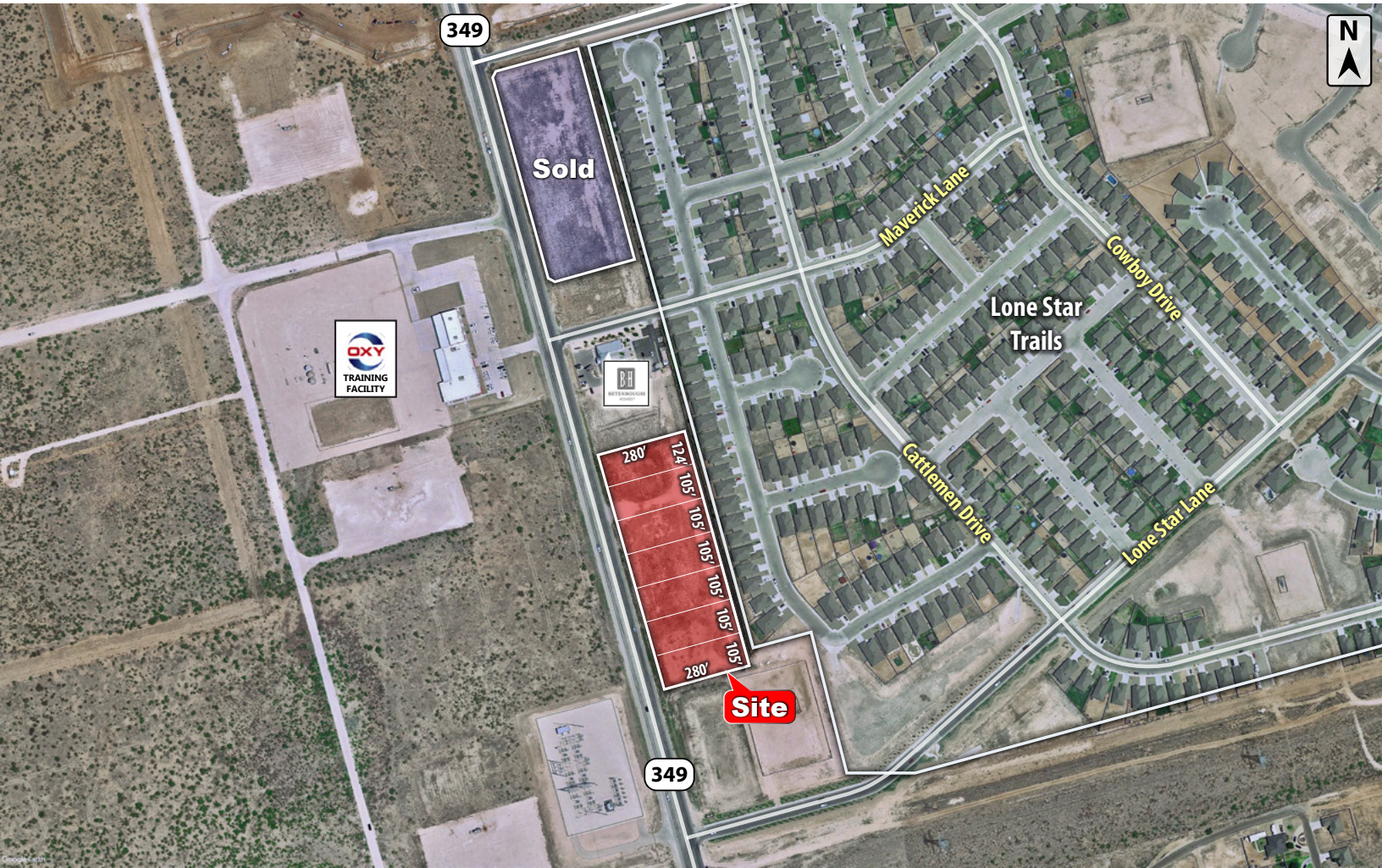




6700 HWY 349

Midland, TX 79705

LAND



PURCHASE PRICE

\$10.00 per SF



TOTAL ACREAGE

5.4 AC



ZONING

Retail & Office

CBCWORLDWIDE.COM

Beau Tucker, CCIM
806.470.3944
BTucker@CBCWorldwide.com
CBCLandMan.com

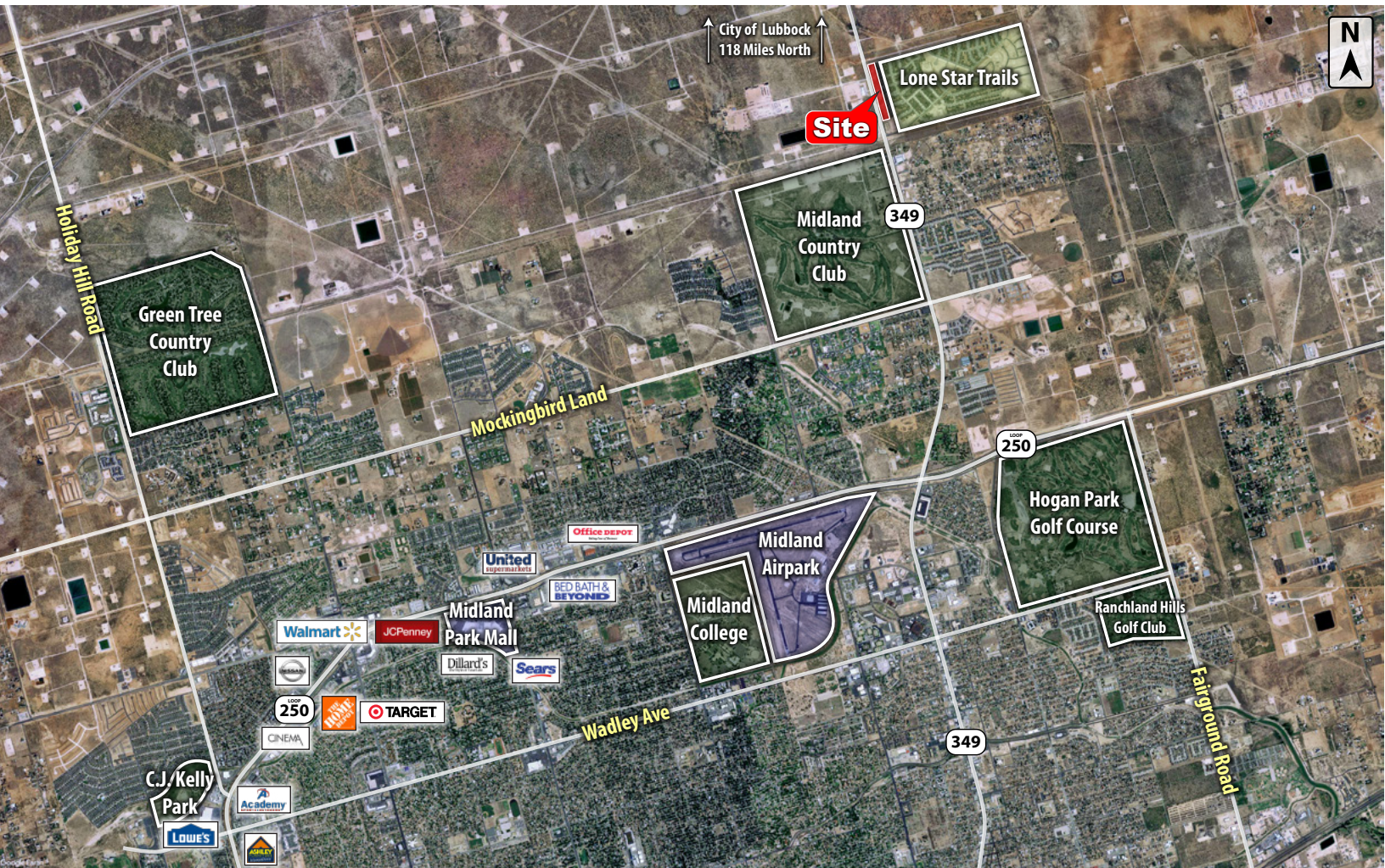


**COLDWELL
BANKER
COMMERCIAL**

CAPITAL ADVISORS



Trade Area & Information



LOCATION

This property sits north of the city Midland on the east side of Highway 349.

DESCRIPTION

A large commercial tract adjacent to the newly developing Lone Star Trails Subdivision. Conveniently located 2.5 miles from the Midland Airpark and near a host of Golf Courses. These commercial tracts fill a growing need in north Midland and are ready for development. Properties not in floodplain.

Zoning is suitable for retail and office.

OPTIONS

- 7 Total Tracts from 0.64 to 5.4 Acres
- \$10.00 per Square Foot

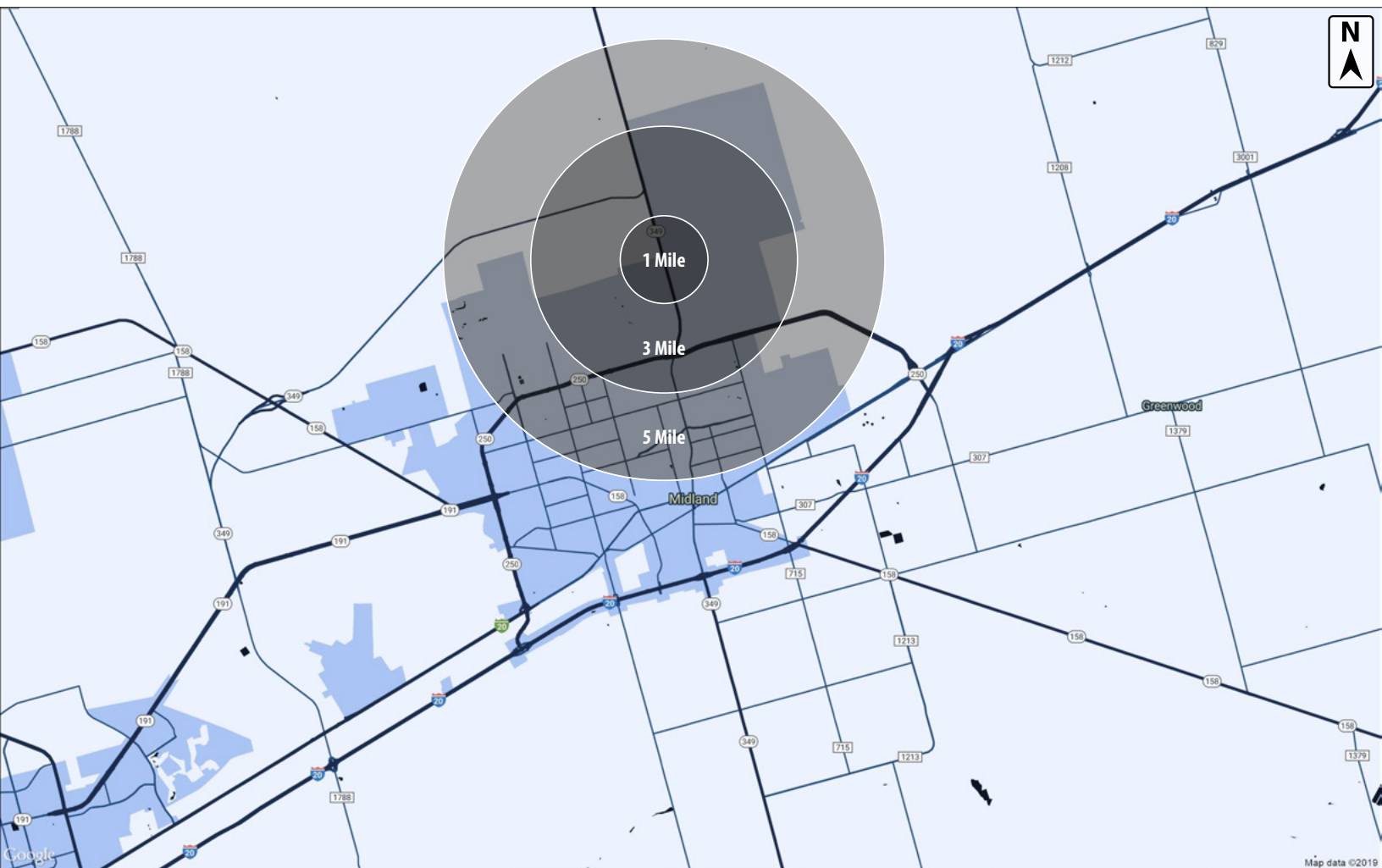


**COLDWELL
BANKER
COMMERCIAL**

CAPITAL ADVISORS



Demographics



POPULATION

	1 MILE	3 MILES	5 MILES
TOTAL POPULATION	6,933	17,722	73,965
MEDIAN AGE	32.5	33.4	33.0
MEDIAN AGE (MALE)	32.0	32.4	32.1
MEDIAN AGE (FEMALE)	33.0	34.4	34.0

HOUSEHOLDS & INCOME

	1 MILE	3 MILES	5 MILES
TOTAL HOUSEHOLDS	2,144	6,096	26,277
# OF PERSONS PER HH	3.1	2.5	2.4
AVERAGE HH INCOME	\$46,860	\$137,351	\$128,886
AVERAGE HOUSE VALUE	\$101,564	223,825	\$223,121

CBCWORLDWIDE.COM

Beau Tucker, CCIM
806.470.3944
BTucker@CBCWorldwide.com
CBCLandMan.com

©2020 Coldwell Banker Real Estate LLC, dba Coldwell Banker Commercial Capital Advisors. All rights reserved. Coldwell Banker Commercial® and the Coldwell Banker Commercial are registered service marks owned by Coldwell Banker Real Estate LLC. Coldwell Banker Real Estate LLC, dba Coldwell Banker Commercial Affiliates fully supports the principles of the Fair Housing Act and the Equal Opportunity Act. Each office is independently owned and operated. The information provided is deemed reliable, but it is not guaranteed to be accurate or complete, and it should not be relied upon as such. This information should be independently verified before any person enters into a transaction based upon it.



**COLDWELL
BANKER
COMMERCIAL**

CAPITAL ADVISORS