

LAND

FOR SALE



COLDWELL
BANKER
COMMERCIAL

CAPITAL ADVISORS

8201 QUINCY AVENUE
LUBBOCK, TX 79424



NEARBY TENANTS 1.5 MILES

Walmart



PROPERTY INFORMATION

LOCATION:

This property is the southeast corner of 82nd Street and Quincy Avenue.

DESCRIPTION:

An 82nd Street frontage tract in growing southwest Lubbock. Conveniently located in the Frenship School District and is apart of the Milwaukee Corridor. This tract has great visibility and access.

FLOODZONE:

Property is not in the floodplain.

ZONING:

Planned on being zoned Garden Office (GO).

SIZE:

20,038 Square Feet

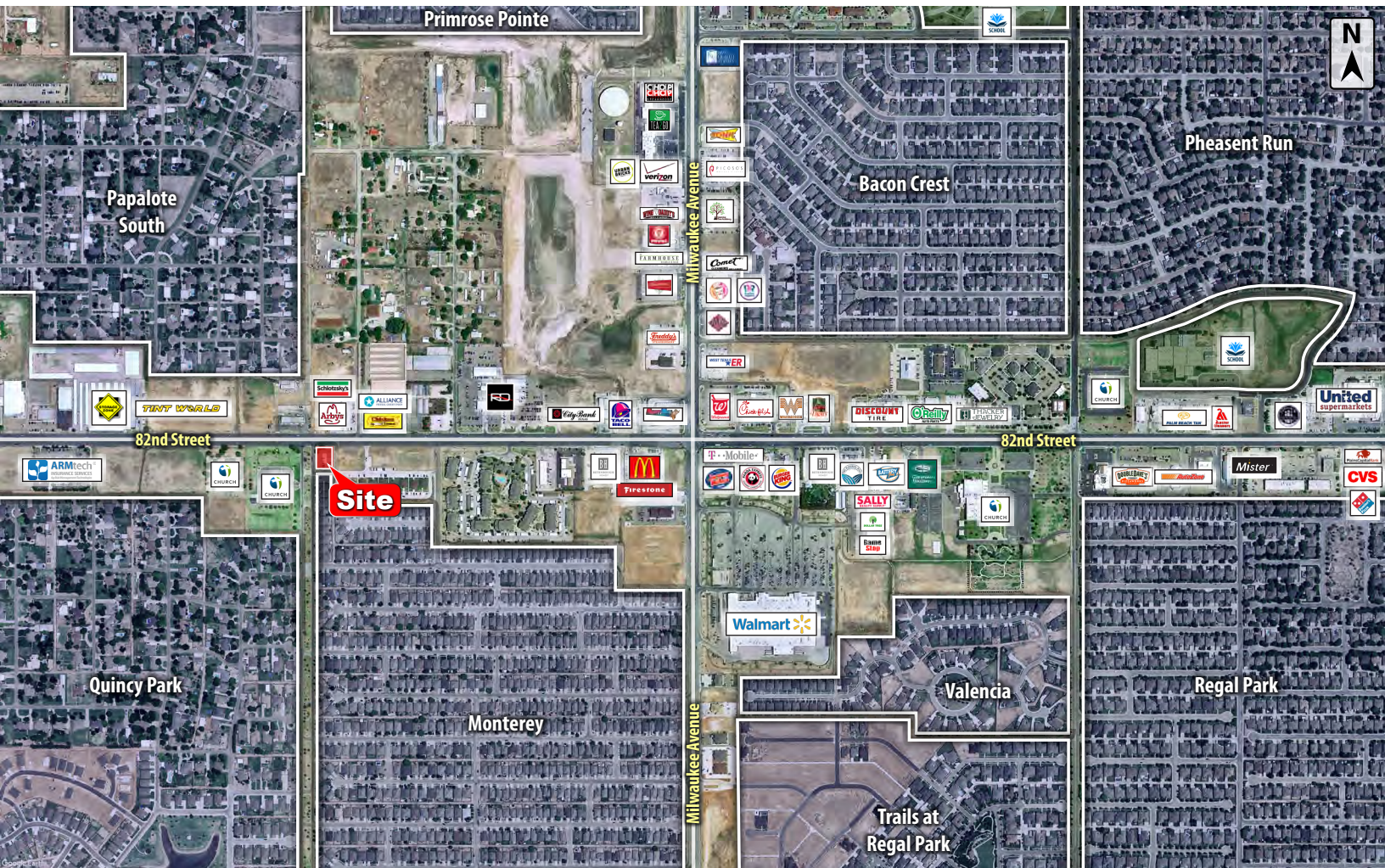
SALES PRICE:

\$10.00 per Square Foot

CBCCapitalAdvisors.com
CBCWorldwide.com

Coldwell Banker Commercial
CAPITAL ADVISORS

4924 S. Loop 289
Lubbock, TX 79414
806.793.0888

LUBBOCK, TX
TRADE AREA


DEMOGRAPHICS

POPULATION	1 MILE	3 MILES	5 MILES
TOTAL POPULATION	5,427	34,274	99,658
MEDIAN AGE	32.9	36.6	35.3
MEDIAN AGE (MALE)	33.2	35.7	34.2
MEDIAN AGE (FEMALE)	32.3	37.2	36.5
HOUSEHOLDS & INCOME	1 MILE	3 MILES	5 MILES
TOTAL HOUSEHOLDS	2,028	13,901	41,320
# OF PERSONS PER HH	2.7	2.5	2.4
AVERAGE HH INCOME	\$92,006	\$76,736	\$70,658
AVERAGE HOUSE VALUE	\$197,027	\$165,950	\$153,049

For Additional
Information Contact:



Beau Tucker, CCIM
The Land Man

806.784.3298 direct
806.470.3944 cell

BTucker@CBCWorldwide.com