



## NWC I-27 & N LOOP 289

Lubbock, TX 79403

LAND



## QUICK FACTS



PURCHASE PRICE

**\$5.00 per SF**



TOTAL ACREAGE

**3 AC**



ZONING

**C4**



TRAFFIC COUNT

**58,000+ VPD**

[CBCWORLDWIDE.COM](http://CBCWORLDWIDE.COM)

Beau Tucker, CCIM  
806.470.3944  
[BTucker@CBCWorldwide.com](mailto:BTucker@CBCWorldwide.com)  
[CBCLandMan.com](http://CBCLandMan.com)



**COLDWELL  
BANKER  
COMMERCIAL**

**CAPITAL ADVISORS**





## Trade Area & Information



## LOCATION

Located at the northwest corner of Interstate 27 & the North Loop 289.

## DESCRIPTION

This tract has interstate frontage in north Lubbock with great visibility and is ready for commercial development. The Lubbock Business Park, Lubbock Preston Smith International Airport, Texas Tech University, University Medical Center, Covenant Health Systems and downtown Lubbock are all just minutes away.

Property is not in the floodplain.

## OPTIONS

2.97 Acres - \$5.00 per SF



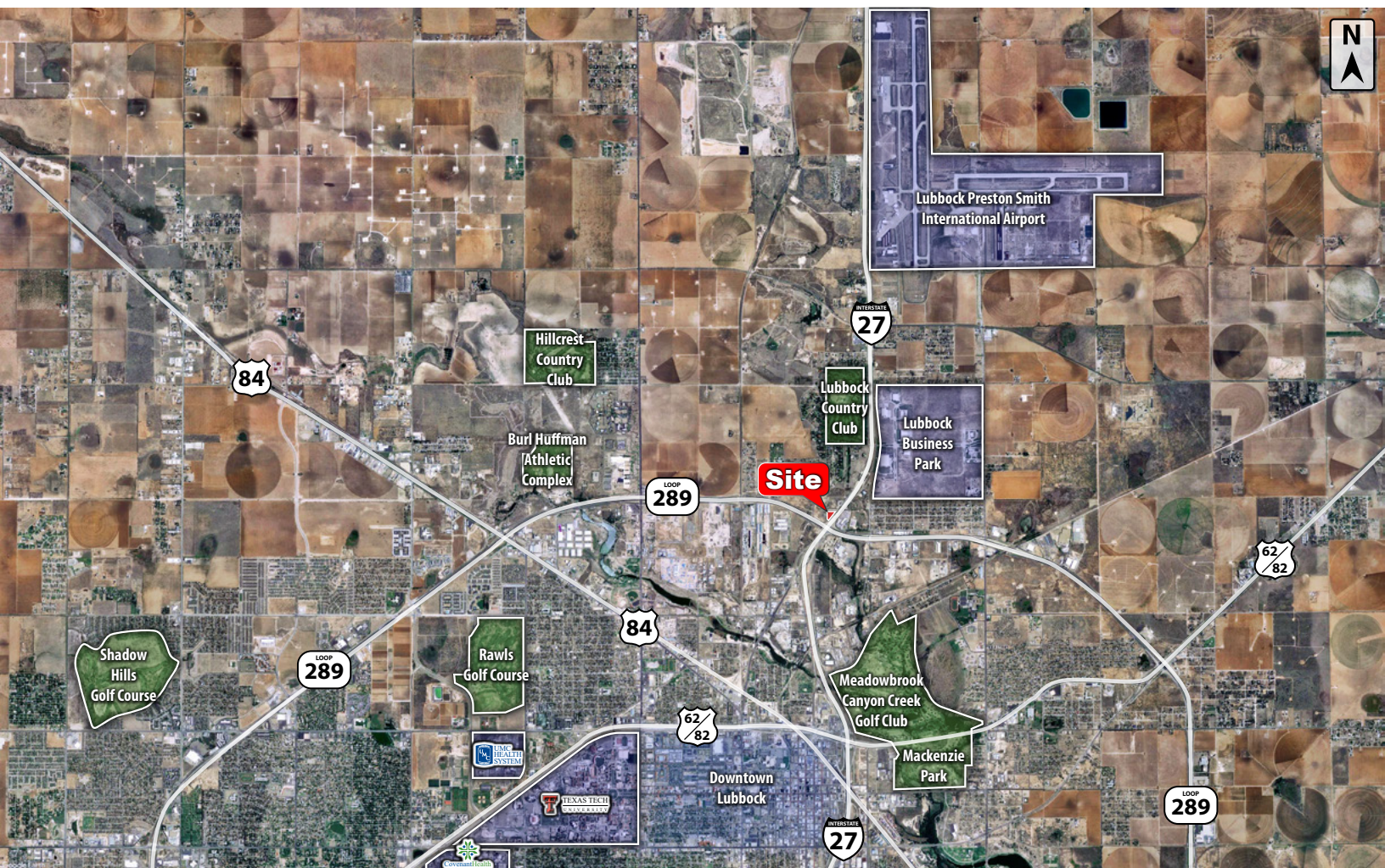
**COLDWELL  
BANKER  
COMMERCIAL**

CAPITAL ADVISORS





## Demographics



### POPULATION

TOTAL POPULATION	2,261	21,577	78,263
MEDIAN AGE	36.6	40.4	39.3
MEDIAN AGE (MALE) 3	6.8	38.8	38.1
MEDIAN AGE (FEMALE)	36.0	41.8	40.0

### HOUSEHOLDS & INCOME

TOTAL HOUSEHOLDS	772	7,882	26,771
# OF PERSONS PER HH	2.9	2.7	2.9
AVERAGE HH INCOME	\$43,092	\$33,052	\$37,167
AVERAGE HOUSE VALUE	\$158,394	\$112,805	\$121,634

CBCWORLDWIDE.COM

Beau Tucker, CCIM  
806.470.3944  
BTucker@CBCWorldwide.com  
CBCLandMan.com

©2020 Coldwell Banker Real Estate LLC, dba Coldwell Banker Commercial Capital Advisors. All rights reserved. Coldwell Banker Commercial® and the Coldwell Banker Commercial are registered service marks owned by Coldwell Banker Real Estate LLC. Coldwell Banker Real Estate LLC, dba Coldwell Banker Commercial Affiliates fully supports the principles of the Fair Housing Act and the Equal Opportunity Act. Each office is independently owned and operated. The information provided is deemed reliable, but it is not guaranteed to be accurate or complete, and it should not be relied upon as such. This information should be independently verified before any person enters into a transaction based upon it.



**COLDWELL  
BANKER  
COMMERCIAL**

**CAPITAL ADVISORS**