



LAND

FOR SALE



COLDWELL
BANKER
COMMERCIAL

CAPITAL ADVISORS

MILWAUKEE AVENUE & ERSKINE STREET
LUBBOCK, TX 79416



NEARBY TENANTS 2 MILES



PROPERTY INFORMATION

LOCATION:

Near the Milwaukee Avenue & Erskine Street intersection.

DESCRIPTION:

Large development tracts in developing northwest Lubbock with frontage on both major thoroughfares, Milwaukee Avenue and Erskine Street. Local business in the area include a Super-Walmart, Walgreens, CVS, Ford, Toyota, Kia, United Supermarkets, Applebee's, McDonald's, Covenant School of nursing and many more.

FLOODZONE:

Properties are not in the floodplain.

TRACT A:

Sold

TRACT B:

\$3.00 per Square Foot - 11.10 Acres - Zoned C2, R1, R2

TRACT C:

\$1.50 per Square Foot - 12.52 Acres - Zoned A1

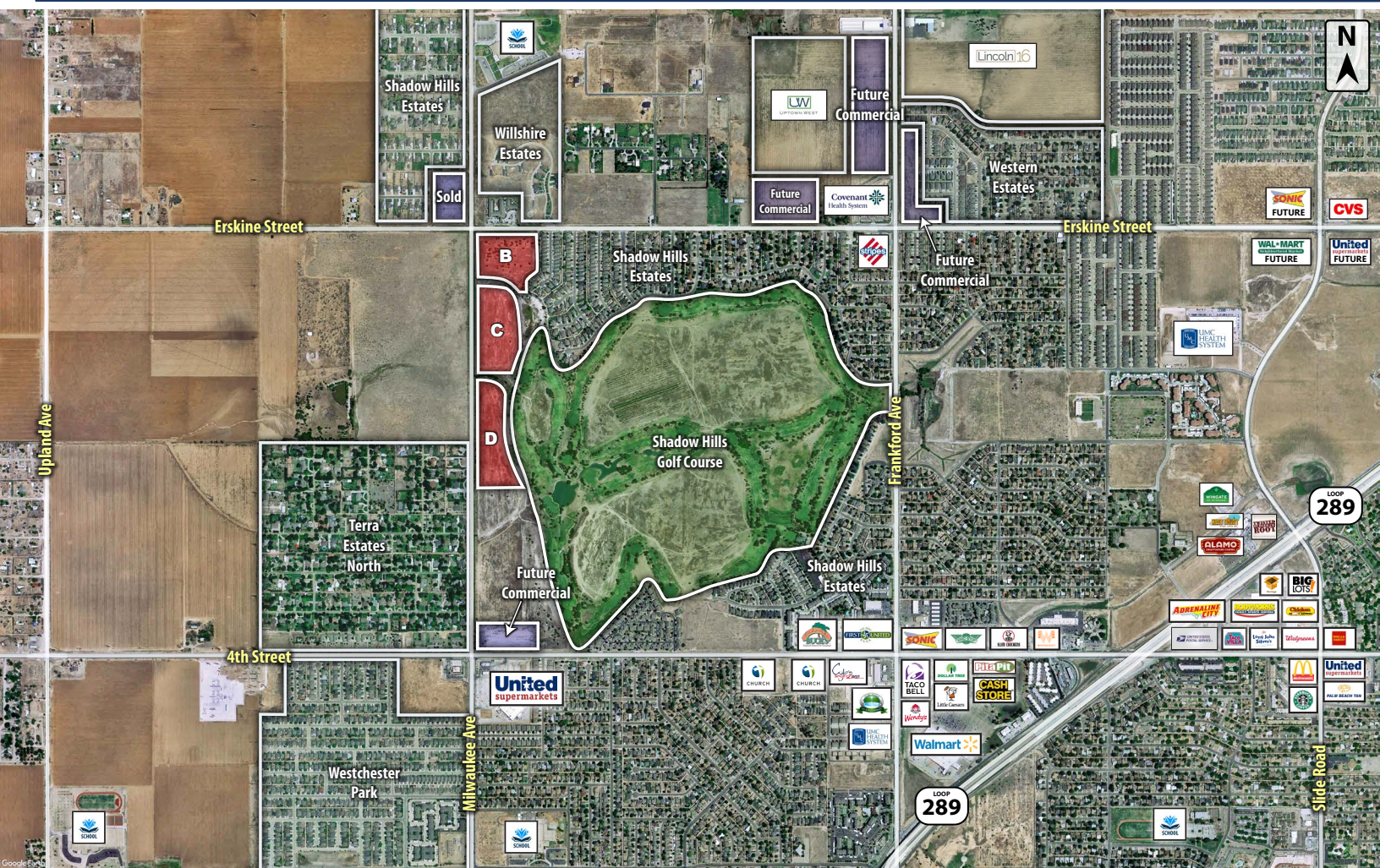
TRACT D:

\$1.50 per Square Foot - 9.55 Acres - Zoned A1, A2

CBCCapitalAdvisors.com
CBCWorldwide.com

Coldwell Banker Commercial
CAPITAL ADVISORS

4924 S. Loop 289
Lubbock, TX 79414
806.793.0888

LUBBOCK, TX
FAR AERIAL


DEMOGRAPHICS

POPULATION	1 MILE	3 MILES	5 MILES
TOTAL POPULATION	3,888	54,515	125,262
MEDIAN AGE	43.4	33.6	34.3
MEDIAN AGE (MALE)	34.2	32.9	33.2
MEDIAN AGE (FEMALE)	35.0	34.5	35.7
HOUSEHOLDS & INCOME	1 MILE	3 MILES	5 MILES
TOTAL HOUSEHOLDS	1,709	22,703	51,874
# OF PERSONS PER HH	2.3	2.4	2.4
AVERAGE HH INCOME	\$67,687	\$64,930	\$70,729
AVERAGE HOUSE VALUE	\$174,673	\$150,550	\$153,928

For Additional
Information Contact:



Beau Tucker, CCIM

The Land Man

806.784.3298 direct

806.470.3944 cell

BTucker@CBCWorldwide.com