



EPIC BUSINESS PARK - 114TH & VICKSBURG

Lubbock, TX 79424

LAND



QUICK FACTS



PURCHASE PRICE
Call Broker



TOTAL ACREAGE
0.5-2 AC



ZONING
Commercial



TRAFFIC COUNT
17,000+ VPD
(at intersection)

CBCWORLDWIDE.COM

Beau Tucker, CCIM
806.470.3944
BTucker@CBCWorldwide.com
CBCLandMan.com

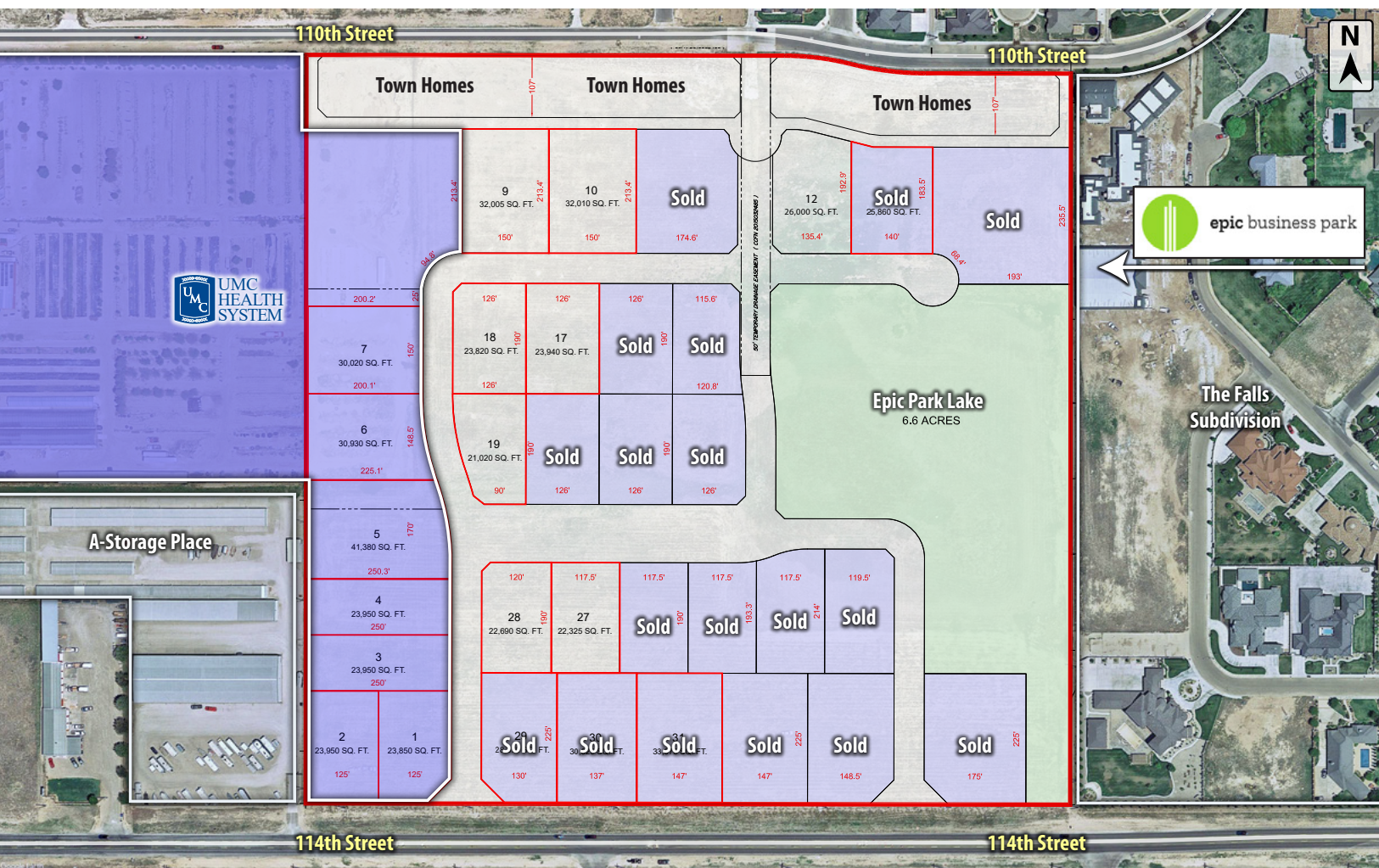


**COLDWELL
BANKER
COMMERCIAL**

CAPITAL ADVISORS



Trade Area & Information



LOCATION

This property sits between Slide Road and Quaker Avenue on the north side of 114th Street.

DESCRIPTION

Conveniently located in the heart of growing southwest Lubbock. This Prime location offered through the Epic Business Park development will be Lubbock's newest and most luxurious business park.

Pad sites are adequate with both roads and utilities and are ready to build.

Lots are not in the floodplain.

OPTIONS

Pad Sites range from 21,020 Sq. Ft to 41,380 Sq. Ft.

Call Broker for Pricing

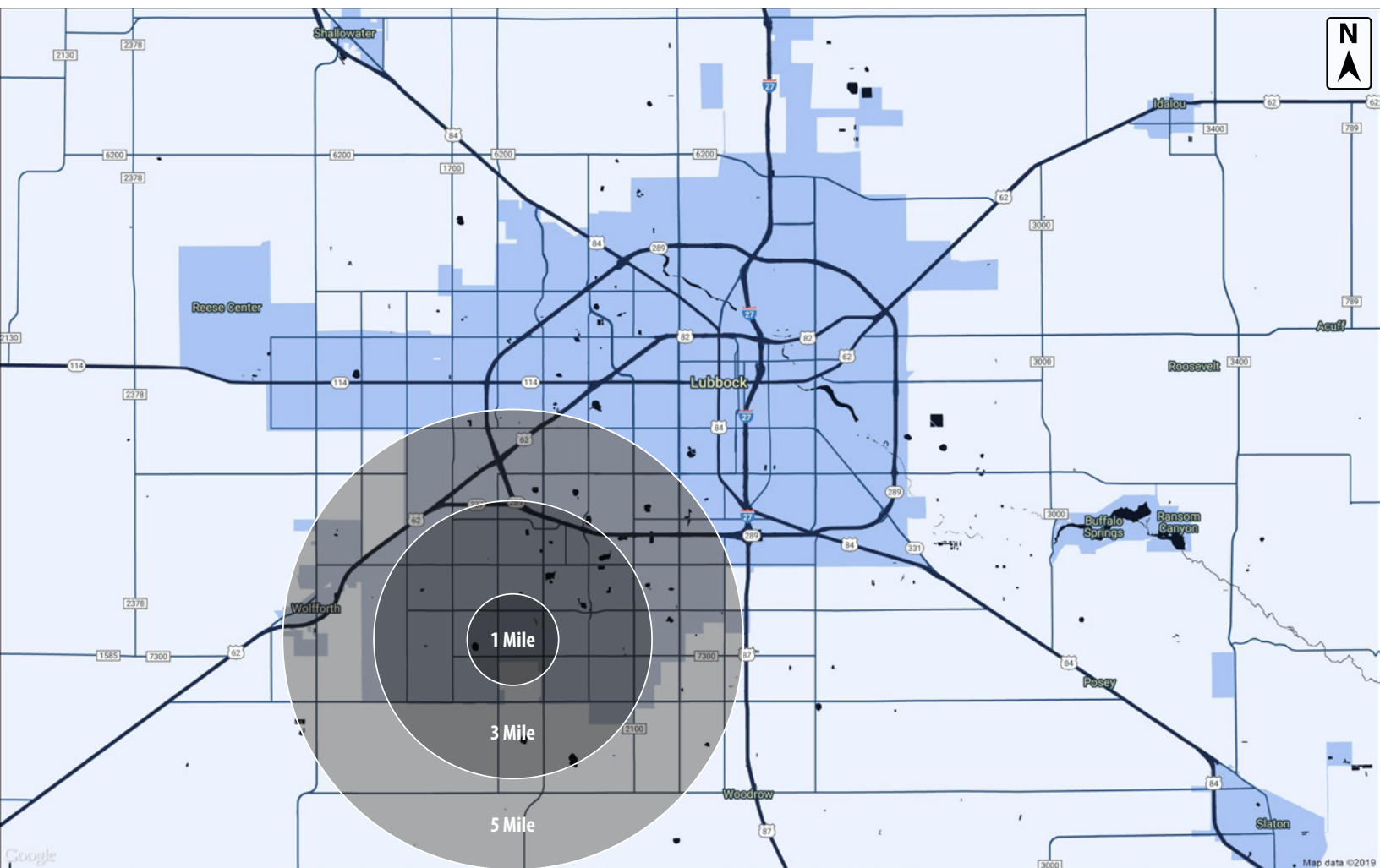


**COLDWELL
BANKER
COMMERCIAL**

CAPITAL ADVISORS



Demographics



POPULATION

	1 MILE	3 MILES	5 MILES
TOTAL POPULATION	3,206	40,270	117,448
MEDIAN AGE	38.9	41.5	35.8
MEDIAN AGE (MALE)	38.6	39.8	34.5
MEDIAN AGE (FEMALE)	39.3	42.6	37.2

HOUSEHOLDS & INCOME

	1 MILE	3 MILES	5 MILES
TOTAL HOUSEHOLDS	1,261	16,979	48,471
# OF PERSONS PER HH	2.5	2.4	2.4
AVERAGE HH INCOME	\$138,450	\$92,310	\$69,822
AVERAGE HOUSE VALUE	\$219,682	\$164,302	\$150,693

CBCWORLDWIDE.COM

Beau Tucker, CCIM
806.470.3944
BTucker@CBCWorldwide.com
CBCLandMan.com

©2020 Coldwell Banker Real Estate LLC, dba Coldwell Banker Commercial Capital Advisors. All rights reserved. Coldwell Banker Commercial® and the Coldwell Banker Commercial are registered service marks owned by Coldwell Banker Real Estate LLC. Coldwell Banker Real Estate LLC, dba Coldwell Banker Commercial Affiliates fully supports the principles of the Fair Housing Act and the Equal Opportunity Act. Each office is independently owned and operated. The information provided is deemed reliable, but it is not guaranteed to be accurate or complete, and it should not be relied upon as such. This information should be independently verified before any person enters into a transaction based upon it.



**COLDWELL
BANKER
COMMERCIAL**

CAPITAL ADVISORS