

LAND

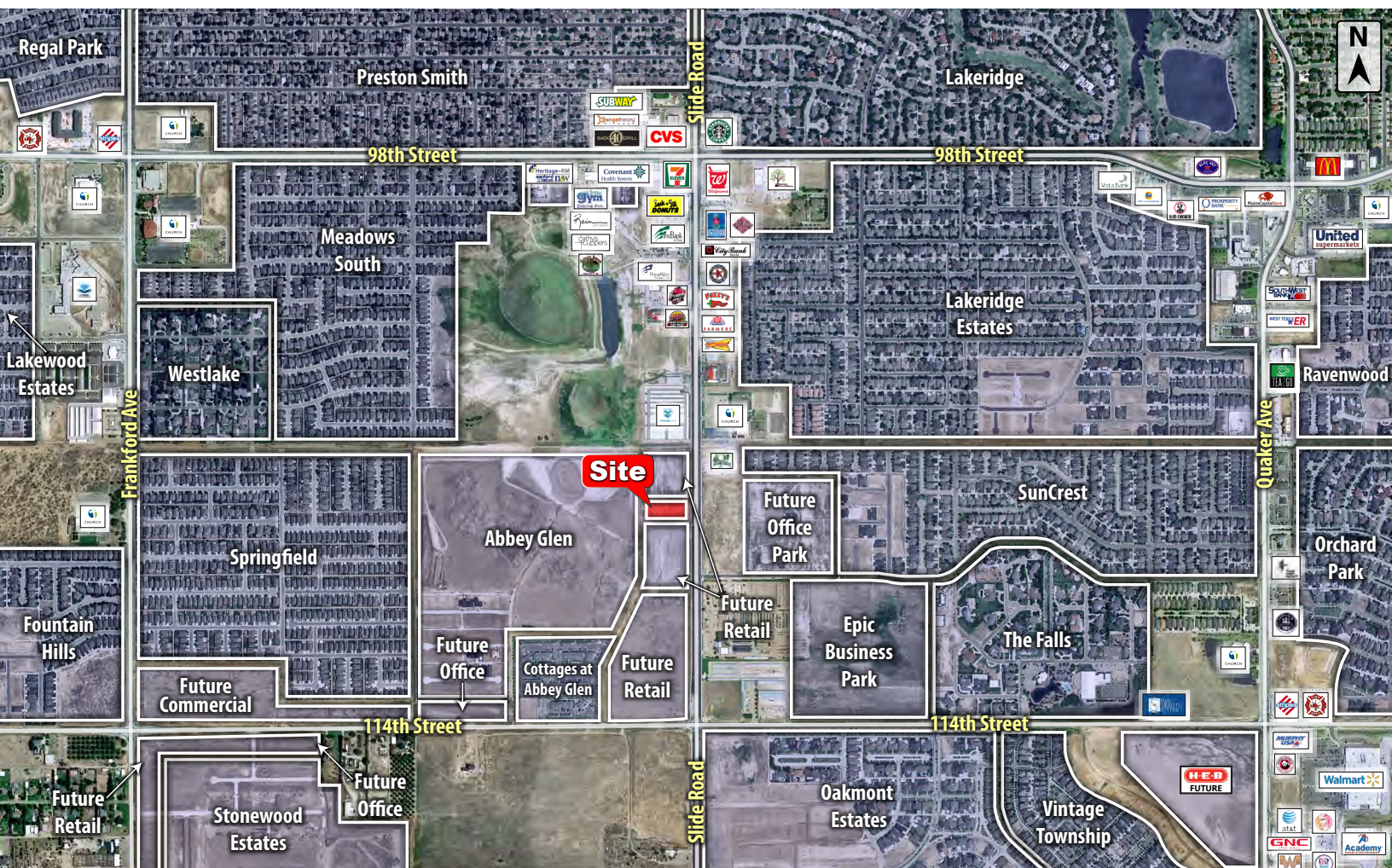
FOR SALE



COLDWELL
BANKER
COMMERCIAL

CAPITAL ADVISORS

10702 SLIDE ROAD
LUBBOCK, TX 79424



NEARBY TENANTS 1/2 MILE



PROPERTY INFORMATION

LOCATION:

This property sits south of 98th Street on the west side of Slide Road inside the southwest city limits.

DESCRIPTION:

A development tract in rapidly growing southwest Lubbock. Conveniently located in the Cooper School District adjacent to the brand new Abbey Glen subdivision. Also a quick 6-minute drive to Loop 289 and only a 2-minute drive to the future Loop 88.

FLOODZONE:

Property is not in the floodplain.

SIZE:

1.38 Acres

SALES PRICE:

\$12.50 per Square Foot

CBCCapitalAdvisors.com
CBCWorldwide.com

Coldwell Banker Commercial
CAPITAL ADVISORS

4924 S. Loop 289
Lubbock, TX 79414
806.793.0888

LUBBOCK, TX
CLOSE AERIAL


DEMOGRAPHICS

POPULATION	1 MILE	3 MILES	5 MILES
TOTAL POPULATION	3,949	42,899	120,728
MEDIAN AGE	40.8	41.2	35.6
MEDIAN AGE (MALE)	40.2	39.3	34.5
MEDIAN AGE (FEMALE)	41.3	42.3	37.0
HOUSEHOLDS & INCOME	1 MILE	3 MILES	5 MILES
TOTAL HOUSEHOLDS	1,590	18,213	49,858
# OF PERSONS PER HH	2.5	2.4	2.4
AVERAGE HH INCOME	\$124,020	\$91,042	\$70,166
AVERAGE HOUSE VALUE	\$154,343	\$170,842	\$151,982

For Additional
Information Contact:



Beau Tucker, CCIM
The Land Man

806.784.3298 direct
806.470.3944 cell

BTucker@CBCWorldwide.com